

User manual

S22D390H
S22D393H
S24D390HL
S24D393HL
S27D390H
S27D393H

The color and the appearance may differ depending on the product, and the specifications are subject to change without prior notice to improve the performance.

Table Of Contents

| | | |
|---|-----------|---|
| BEFORE USING THE PRODUCT | 7 | Copyright |
| | 7 | Icons used in this manual |
| | 8 | Cleaning |
| | 9 | Securing the Installation Space |
| | 9 | Precautions for storage |
| | 10 | Safety Precautions |
| | 10 | Symbols |
| | 11 | Electricity and Safety |
| | 12 | Installation and Safety |
| | 14 | Operation and Safety |
| | 18 | Correct posture to use the product |
| PREPARATIONS | 19 | Checking the Contents |
| | 19 | Checking the Components |
| | 20 | Parts |
| | 20 | Frontal Buttons |
| | 23 | Reverse Side |
| | 24 | Installation |
| | 24 | Attaching the Stand |
| | 25 | Removing the Stand |
| | 26 | Adjusting the Product Tilt |
| | 27 | Anti-theft Lock |
| CONNECTING AND USING A SOURCE DEVICE | 28 | Before Connecting |
| | 28 | Pre-connection Checkpoints |
| | 28 | Connecting and Using a PC |
| | 28 | Connecting to a PC |
| | 30 | Connecting to Headphones |
| | 31 | Connecting the Power |
| | 32 | Driver Installation |
| | 33 | Setting Optimum Resolution |

Table Of Contents

| | | |
|---------------------|-----------|--|
| SCREEN SETUP | 34 | Brightness |
| | 34 | Configuring Brightness |
| | 35 | Contrast |
| | 35 | Configuring Contrast |
| | 36 | Sharpness |
| | 36 | Configuring Sharpness |
| | 37 | Game Mode |
| | 37 | Configuring Game Mode |
| | 38 | SAMSUNG MAGIC Bright |
| | 38 | Configuring SAMSUNG MAGIC Bright |
| | 40 | SAMSUNG MAGIC Angle (S22D390H / S22D393H) |
| | 40 | Configuring SAMSUNG MAGIC Angle |
| | 42 | SAMSUNG MAGIC Upscale |
| | 42 | Configuring SAMSUNG MAGIC Upscale |
| | 43 | Image Size |
| | 43 | Changing the Image Size |
| | 45 | HDMI Black Level |
| | 45 | Configuring the HDMI Black Level Settings |
| | 46 | Response Time (S24D390HL / S24D393HL / S27D390H / S27D393H) |
| | 46 | Configuring the Response Time |
| | 47 | H-Position & V-Position |
| | 47 | Configuring H-Position & V-Position |
| | 49 | Coarse |
| | 49 | Adjusting Coarse |
| | 50 | Fine |
| | 50 | Adjusting Fine |

Table Of Contents

| | | |
|-------------------------|-----------|--|
| CONFIGURING TINT | 51 | Red |
| | 51 | Configuring Red |
| | 52 | Green |
| | 52 | Configuring Green |
| | 53 | Blue |
| | 53 | Configuring Blue |
| | 54 | Color Tone |
| | 54 | Configuring the Color Tone Settings |
| | 55 | Gamma |
| | 55 | Configuring Gamma |
| COORDINATING OSD | 56 | Language |
| | 56 | Configuring Language |
| | 57 | Menu H-Position & Menu V-Position |
| | 57 | Configuring Menu H-Position & Menu V-Position |
| | 58 | Display Time |
| | 58 | Configuring Display Time |
| | 59 | Transparency |
| | 59 | Changing Transparency |
| SETUP AND RESET | 60 | Reset All |
| | 60 | Initializing Settings (Reset All) |
| | 61 | Eco Saving |
| | 61 | Configuring Eco Saving |
| | 62 | Off Timer |
| | 62 | Configuring Off Timer |
| | 63 | Configuring Turn Off After |
| | 64 | PC/AV Mode |
| | 64 | Configuring PC/AV Mode |

Table Of Contents

| | | |
|------------------------------------|----|---|
| | 65 | Key Repeat Time |
| | 65 | Configuring Key Repeat Time |
| | 66 | Source Detection |
| | 66 | Configuring Source Detection |
| INFORMATION MENU AND OTHERS | 67 | INFORMATION |
| | 67 | Displaying INFORMATION |
| | 68 | Configuring Brightness and Contrast in the Initial Screen |
| | 69 | Configuring Volume in the Initial Screen |
| INSTALLING THE SOFTWARE | 70 | Easy Setting Box |
| | 70 | Installing the Software |
| | 71 | Removing the Software |
| TROUBLESHOOTING GUIDE | 72 | Requirements Before Contacting Samsung Customer Service Center |
| | 72 | Testing the Product |
| | 72 | Checking the Resolution and Frequency |
| | 72 | Check the following. |
| | 75 | Q & A |
| SPECIFICATIONS | 77 | General |
| | 79 | PowerSaver |
| | 80 | Standard Signal Mode Table |
| APPENDIX | 82 | Contact SAMSUNG WORLD WIDE |
| | 88 | Responsibility for the Pay Service (Cost to Customers) |
| | 88 | Not a product defect |
| | 88 | A Product damage caused by customer's fault |
| | 88 | Others |

Table Of Contents

| | |
|-----------|--|
| 90 | Correct Disposal |
| 90 | Correct Disposal of This Product (Waste Electrical & Electronic Equipment) |
| 91 | Terminology |

INDEX

Before Using the Product

Copyright

The contents of this manual are subject to change without notice to improve quality.

© 2014 Samsung Electronics

Samsung Electronics owns the copyright for this manual.

Use or reproduction of this manual in parts or entirety without the authorization of Samsung Electronics is prohibited.

Microsoft and Windows are registered trademarks of Microsoft Corporation.

VESA, DPM and DDC are registered trademarks of the Video Electronics Standards Association.

- An administration fee may be charged if either
 - (a) an engineer is called out at your request and there is no defect in the product (i.e. where you have failed to read this user manual).
 - (b) you bring the unit to a repair centre and there is no defect in the product (i.e. where you have failed to read this user manual).
- The amount of such administration charge will be advised to you before any work or home visit is carried out.

Icons used in this manual



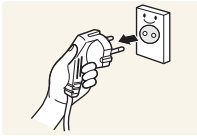
The following images are for reference only. Real-life situations may differ from what is shown in the images.

Before Using the Product

Cleaning

Exercise care when cleaning as the panel and exterior of advanced LCDs are easily scratched.

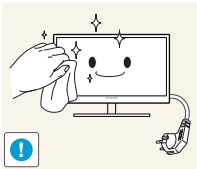
Take the following steps when cleaning.



1. Power off the monitor and computer.
2. Disconnect the power cable from the monitor.



Hold the power cable by the plug and do not touch the cable with wet hands. Otherwise, an electric shock may result.



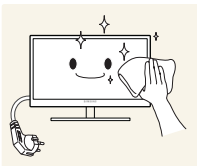
3. Wipe the monitor screen using a clean, soft and dry cloth.



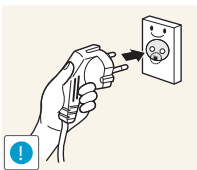
- Do not apply a cleaning agent that contains alcohol, solvent, or surfactant to the monitor.



- Do not spray water or detergent directly on the product.



4. Wet a soft and dry cloth in water and wring thoroughly to clean the exterior of the monitor.



5. Connect the power cable to the product after cleaning the product.
6. Power on the monitor and computer.

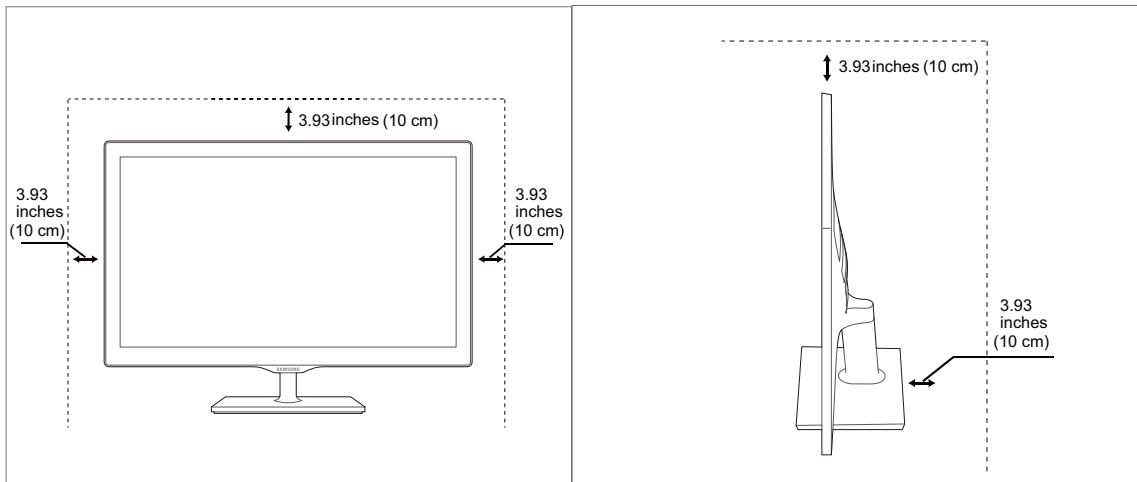
Before Using the Product

Securing the Installation Space

- Ensure some space around the product for ventilation. An internal temperature rise may cause fire and damage the product. Be sure to allow the amount of space as shown below or greater when installing the product.



The exterior may differ depending on the product.



Precautions for storage

High-glossy models can develop white stains on the surface if an ultrasonic wave humidifier is used nearby.





Be sure to contact Samsung Customer Service Center (page 82) if the inside of the monitor needs cleaning. (A service fee will be charged.)





Before Using the Product

Safety Precautions

| |
|---|
| Caution |
| RISK OF ELECTRIC SHOCK DO NOT OPEN |
| Caution: TO REDUCE THE RISK OF ELECTRIC SHOCK, DO NOT REMOVE COVER (OR BACK). THERE ARE NO USER SERVICEABLE PARTS INSIDE. REFER ALL SERVICING TO QUALIFIED PERSONNEL. |

| | |
|---|--|
|  | This symbol indicates that high voltage is present inside. It is dangerous to make any kind of contact with any internal part of this product. |
|  | This symbol alerts you that important literature concerning operation and maintenance has been included with this product. |

Symbols

| | |
|---|--|
|  Warning | A serious or fatal injury may result if instructions are not followed. |
|  Caution | Personal injury or damage to properties may result if instructions are not followed. |
|  | Activities marked by this symbol are prohibited. |
|  | Instructions marked by this symbol must be followed. |

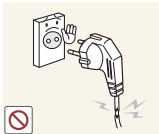
Before Using the Product

Electricity and Safety



The following images are for reference only. Real-life situations may differ from what is shown in the images.

Warning



Do not use a damaged power cable or plug, or a loose power socket.

- An electric shock or fire may result.



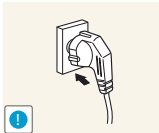
Do not plug many products into the same power socket.

- Otherwise, the socket may overheat and cause a fire.



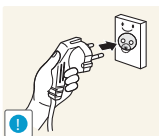
Do not touch the power plug with wet hands.

- Otherwise, an electric shock may result.



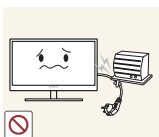
Insert the power plug all the way in so it is not loose.

- An unstable connection may cause a fire.



Ensure you connect the power plug to a grounded power socket (type 1 insulated devices only).

- An electric shock or injury may result.



Do not bend or pull the power cable with force. Do not weigh the power cable down with a heavy object.

- A damaged power cable may cause an electric shock or fire.



Do not place the power cable or product near heat sources.

- An electric shock or fire may result.



Remove foreign substances such as dust around the plug pins and power socket with a dry cloth.

- Otherwise, a fire may result.

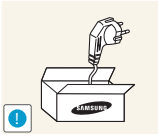
Before Using the Product

Caution



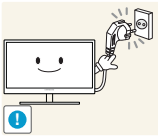
Do not unplug the power cable when the product is in use.

- The product may become damaged by an electric shock.



Do not use the power cable for products other than authorized products supplied by Samsung.

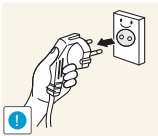
- An electric shock or fire may result.



Keep the power socket where the power cable is connected unobstructed.

- If any problem occurs in the product, unplug the power cable to completely cut the power to the product.

Power to the product cannot be completely cut off with the power button.



Hold the plug when disconnecting the power cable from the power socket.

- An electric shock or fire may result.

Installation and Safety

Warning



DO NOT PLACE CANDLES, INSECT REPELLANTS OR CIGARETTES ON TOP OF THE PRODUCT. DO NOT INSTALL THE PRODUCT NEAR HEAT SOURCES.

- Otherwise, a fire may result.



Avoid installing the product in a narrow space with bad ventilation, such as a bookshelf or wall closet.

- Otherwise, a fire may result due to an increased internal temperature.



Keep the plastic packaging bag for the product in a place that cannot be reached by children.

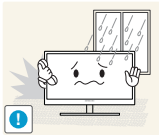
- Children may suffocate.

Before Using the Product



Do not install the product on an unstable or vibrating surface (insecure shelf, sloped surface, etc.).

- The product may fall and break or cause a personal injury.
- Using the product in an area with excess vibration may damage the product or cause a fire.



Do not install the product in a vehicle or a place exposed to dust, moisture (water drips, etc.), oil, or smoke.

- An electric shock or fire may result.



Do not expose the product to direct sunlight, heat, or a hot object such as a stove.

- Otherwise, the product lifespan may be reduced, or a fire may result.



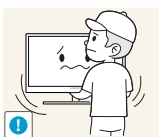
Do not install the product within the reach of young children.

- The product may fall and injure children.



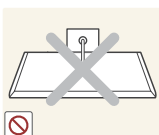
Edible oil, such as soybean oil, can damage or deform the product. Do not install the product in a kitchen or near a kitchen counter.

Caution



Take care not to drop the product when moving it.

- Otherwise, product failure or personal injury may result.



Do not set down the product on its front.

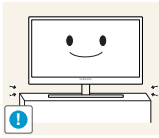
- The screen may become damaged.



When installing the product on a cabinet or shelf, make sure that the bottom edge of the front of the product is not protruding.

- The product may fall and break or cause a personal injury.
- Install the product only on cabinets or shelves of the right size.

Before Using the Product



Put down the product carefully.

- The product may fall and break or cause a personal injury.



Installing the product in an unusual place (a place exposed to a lot of fine dust, chemical substances, extreme temperatures or a significant presence of moisture, or a place where the product will operate continuously for an extended period of time) may seriously affect its performance.

- Be sure to consult Samsung Customer Service Center (page 82) before installation if you want to install the product at such a place.

Operation and Safety

Warning



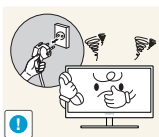
High voltage runs through the product. Do not attempt to disassemble, repair, or modify the product on your own.

- An electric shock or fire may result.
- Contact Samsung Customer Service Center (page 82) for repair.



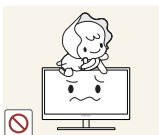
Before moving the product, turn off the power switch and disconnect the power cable and all other connected cables.

- Otherwise, the power cable may be damaged and a fire or electric shock may result.



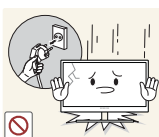
If the product generates a strange noise, a burning smell, or smoke, remove the power cable immediately and contact Samsung Customer Service Center (page 82).

- An electric shock or fire may result.



Do not let children hang from the product or climb on top of it.

- The product may fall, and your child may become injured or seriously harmed.



If the product falls or the exterior is damaged, power off the product, remove the power cable, and contact Samsung Customer Service Center (page 82).

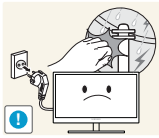
- Otherwise, an electric shock or fire may result.



Do not put a heavy object, toy, or sweets on top of the product.

- The product or heavy objects may fall as children try to reach for the toy or sweets resulting in a serious injury.

Before Using the Product



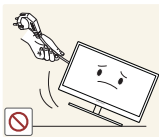
If there is a thunderstorm or lightning strike, turn off the power and disconnect the power cable.

- An electric shock or fire may result.



Do not drop objects on the product or apply impact.

- An electric shock or fire may result.



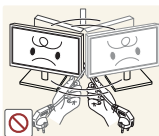
Do not move the product by pulling the power cable or any cable.

- Otherwise, the cable may be damaged and product failure, an electric shock or fire may result.



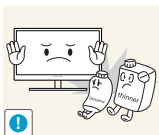
If a gas leakage is found, do not touch the product or power plug. Also, ventilate the area immediately.

- Sparks can cause an explosion or fire.



Do not lift or move the product by pulling the power cable or any cable.

- Otherwise, the cable may be damaged and product failure, an electric shock or fire may result.



Do not use or keep combustible spray or an inflammable substance near the product.

- An explosion or fire may result.



Ensure the vents are not blocked by tablecloths or curtains.

- Otherwise, a fire may result from an increased internal temperature.



Do not insert a metallic object (a chopstick, coin, hair pin, etc.) or inflammable object (paper, match, etc.) into the vent or ports of the product.

- If water or any foreign substance enters the product, be sure to power off the product, remove the power cable, and contact Samsung Customer Service Center (page 82).
- Product failure, an electric shock or fire may result.

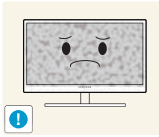


Do not place objects containing liquid (vases, pots, bottles, etc) or metallic objects on top of the product.

- If water or any foreign substance enters the product, be sure to power off the product, remove the power cable, and contact Samsung Customer Service Center (page 82).
- Product failure, an electric shock or fire may result.

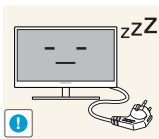
Before Using the Product

Caution



Leaving the screen fixed on a stationary image for an extended period of time may cause afterimage burn-in or defective pixels.

- If you are not going to use the product for an extended period of time, activate power-saving mode or a moving-picture screen saver.



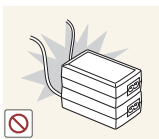
Disconnect the power cable from the power socket if you do not plan on using the product for an extended period of time (vacation, etc.).

- Otherwise, a fire may result from accumulated dust, overheating, an electric shock, or electric leakage.



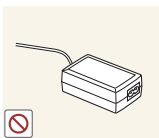
Use the product at the recommended resolution and frequency.

- Otherwise, Your eyesight may deteriorate.



Do not put DC power adapters together.

- Otherwise, a fire may result.



Remove the plastic bag from the DC power adapter before you use it.

- Otherwise, a fire may result.



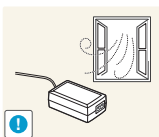
Do not let water enter the DC power device or get the device wet.

- An electric shock or fire may result.
- Avoid using the product outdoors where it can be exposed to rain or snow.
- Be careful not to get the DC power adapter wet when you wash the floor.

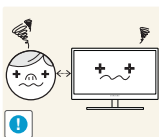


Do not put the DC power adapter near to any heating apparatus.

- Otherwise, a fire may result.



Keep the DC power adapter in a well-ventilated area.



Looking at the screen too close for an extended period of time can deteriorate your eyesight.

Before Using the Product



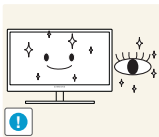
Do not hold the monitor upside-down or move it by holding the stand.

- The product may fall and break or cause a personal injury.



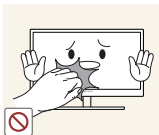
Do not use humidifiers or stoves around the product.

- An electric shock or fire may result.

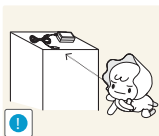


Rest your eyes for more than 5 minutes for every 1 hour of product use.

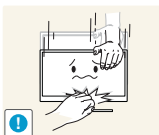
- Eye fatigue will be relieved.



Do not touch the screen when the product has been turned on for an extended period of time as it will become hot.

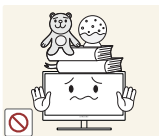


Store the small accessories used with the product out of reach of children.



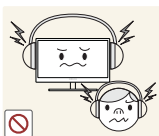
Exercise caution when adjusting the product angle or stand height.

- Otherwise, children's fingers or hands may become stuck and injured.
- Tilting the product excessively may cause it to fall and result in personal injury.



Do not place heavy objects on the product.

- Product failure or personal injury may result.



When using headphones or earphones, do not turn the volume too high.

- Having the sound too loud may damage your hearing.

Before Using the Product

Correct posture to use the product



Use the product in the correct posture as follows:

- Straighten your back.
- Allow a distance of 45 to 50 cm between your eye and the screen, and look slightly downward at the screen.
Keep your eyes directly in front of the screen.
- Adjust the angle so light does not reflect on the screen.
- Keep your forearms perpendicular to your upper arms and level with the back of your hands.
- Keep your elbows at about a right angle.
- Adjust the height of the product so you can keep your knees bent at 90 degrees or more, your heels attached to the floor, and your arms lower than your heart.

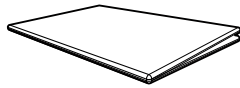
1.1 Checking the Contents

1.1.1 Checking the Components



- Contact the dealer from whom you purchased the product if any item is missing.
- The appearance of the components and items sold separately may differ from the image shown.

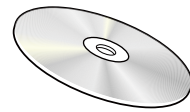
Components



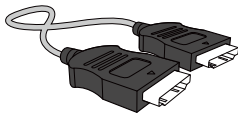
Quick setup guide



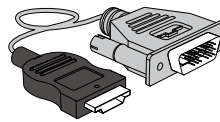
Warranty card
(Not available in some locations)



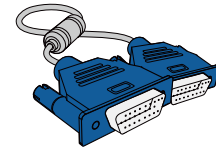
User manual (optional)



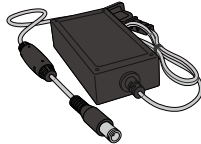
HDMI cable (optional)



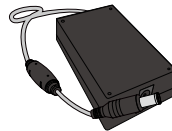
HDMI-DVI cable (optional)



D-SUB cable (optional)



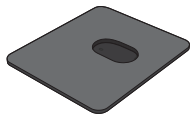
DC power adapter (Integrated)
(optional)



DC power adapter (Detachable)
(optional)



Power cable
(Only provided with the detachable DC power adapter.)



Stand base (optional)



Stand base (optional)



Stand neck (optional)



Stand neck (optional)



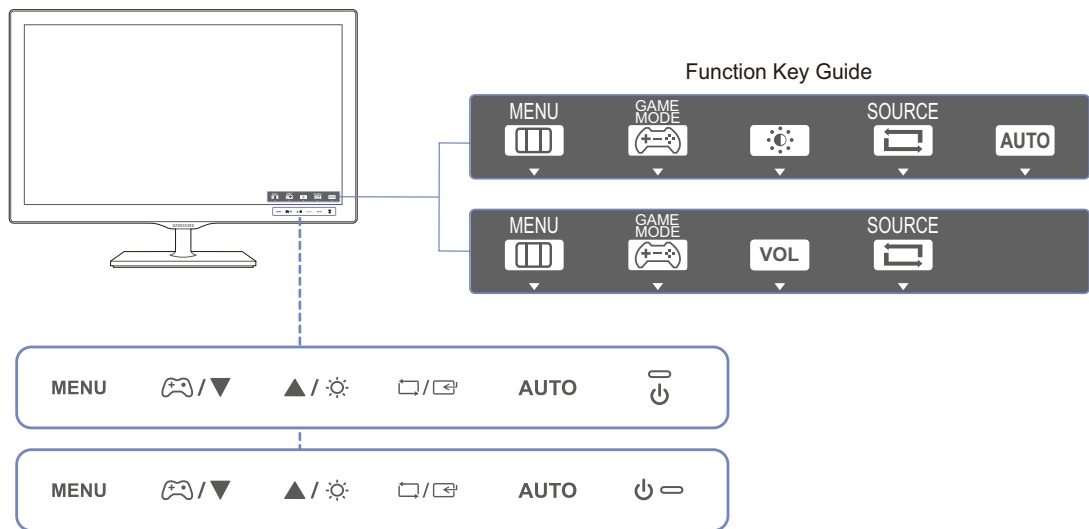
Components may vary depending on the country.

1.2 Parts






1.2.1 Frontal Buttons







The color and shape of parts may differ from what is shown. Specifications are subject to change without notice to improve quality.



| Icons | Description |
|-------|--|
| MENU | <p>Open or close the onscreen display (OSD) menu, or return to the parent menu.</p> <ul style="list-style-type: none"> OSD control lock: Maintain the current settings, or lock the OSD control to prevent unintended changes to settings. Enable: To lock the OSD control, press and hold the [MENU] button for 10 seconds. Disable: To unlock the OSD control, press and hold the [MENU] button for more than 10 seconds. <p> If the OSD control is locked, Brightness and Contrast can be adjusted. Game Mode is available. INFORMATION can be viewed.</p> |

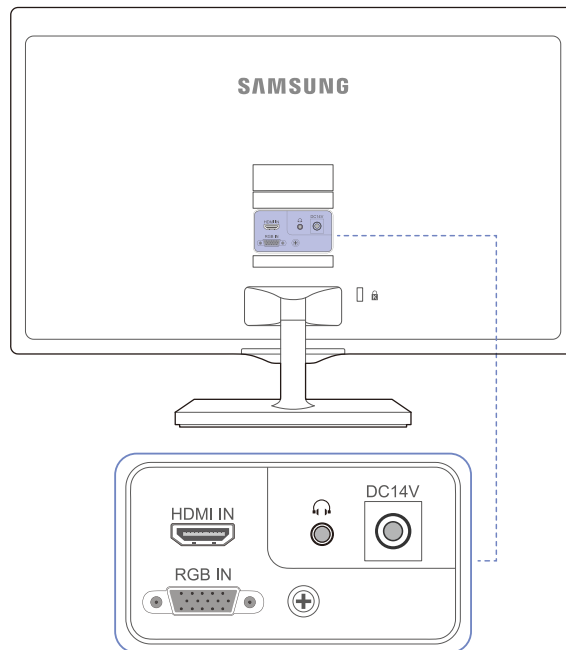
| Icons | Description |
|---|---|
|  | <p>Press to enable or disable Game Mode.</p> <p>The items below are not available if the Game Mode function is enable.</p> <p>S22D390H / S22D393H</p> <ul style="list-style-type: none"> • PICTURE → Contrast, Sharpness, SAMSUNG MAGICBright, SAMSUNG MAGICAngle, SAMSUNG MAGICUpscale • COLOR • SETUP&RESET → Eco Saving <p>S24D390HL / S24D393HL / S27D390H / S27D393H</p> <ul style="list-style-type: none"> • PICTURE → Contrast, Sharpness, SAMSUNG MAGICBright, SAMSUNG MAGICUpscale • COLOR • SETUP&RESET → Eco Saving |
|  | <p>Move to the upper or lower menu or adjust the value for an option on the OSD menu.</p> |
|  | <p>Analog-Use this button to control the brightness and contrast of the screen.</p> <p>HDMI-Use this button to control the volume of the set.</p> |
|  | <p>Confirm a menu selection.</p> <p>Pressing the [□/→] button when the OSD menu is not displayed will change the input source (Analog/HDMI). If you power on the product or change the input source by pressing the [□/→] button, a message that shows the changed input source will appear at the top left corner of the screen.</p> |
| <p>AUTO</p> | <p>Press the [AUTO] button to automatically adjust the screen settings.</p> <ul style="list-style-type: none"> •  Changing the resolution in Display Properties will activate the Auto Adjustment function. • Available only in Analog mode. |






| Icons | Description |
|---|--|
|  | Turn the screen on or off. |
| Function Key Guide | <p>When a control button on the product is pressed, the Function Key Guide will be displayed before the onscreen menu opens. (The guide shows the function of the button pressed.)</p> <p>To access the onscreen menu when the guide is displayed, press the corresponding button again.</p> <p>Function Key Guide may vary depending on the function or product model. Refer to the actual product.</p> <p> The function buttons page shows if Game Mode is enabled.</p> <ul style="list-style-type: none">• : Off• : On |

1.2.2 Reverse Side



The color and shape of parts may differ from what is shown. Specifications are subject to change without notice to improve quality.



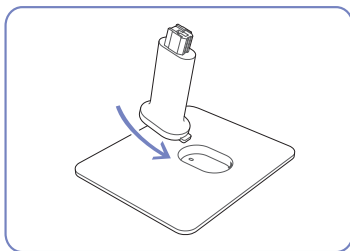
| Port | Description |
|--|---|
| DC14V  | Connects to the DC power adapter. |
| HDMI IN  | Connect to a source device using an HDMI cable. |
| RGB IN  | Connect to a PC using the D-SUB cable. |
|  | Connect to an audio output device such as headphones. <ul style="list-style-type: none">  This function is only available in HDMI mode. This sound could only be heard when using the HDMI-to-HDMI cable. |

1.3 Installation

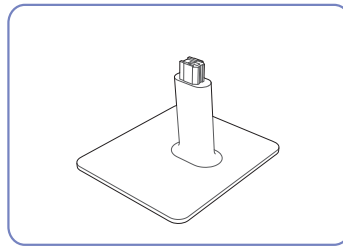
1.3.1 Attaching the Stand



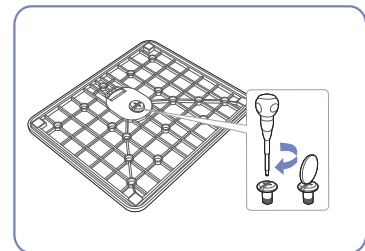
- Before assembling the product, place the product down on a flat and stable surface so that the screen is facing downwards.
- The exterior may differ depending on the product.



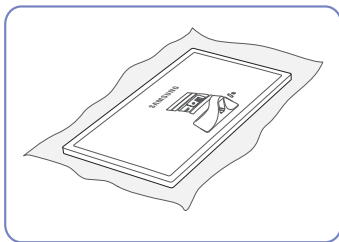
Insert the stand neck into the stand base in the direction shown in the figure.



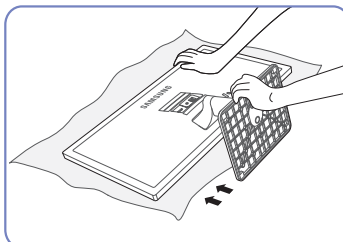
Check that the stand neck is firmly connected.



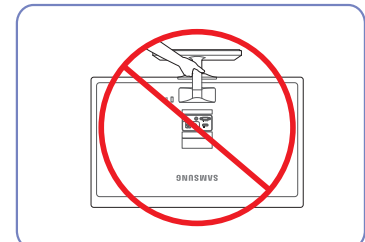
Tightly fasten the connecting screw at the bottom of the stand base.



Place a soft cloth over the table to protect the product and place the product onto the cloth so that the front of the product is facing downwards.



Hold the main body of the product with your hand as shown by the figure.
Push the assembled stand into the main body in the direction of the arrow as shown in the figure.

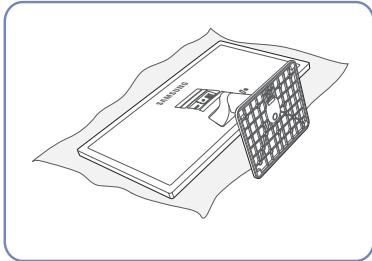


- Caution
Do not hold the product upside down only by the stand.

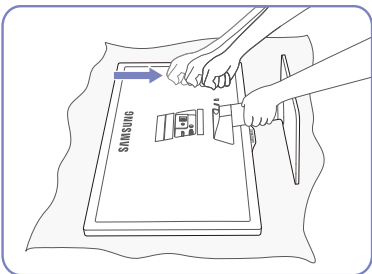
1.3.2 Removing the Stand



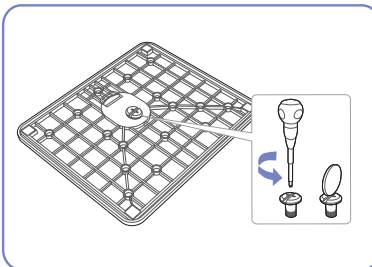
The exterior may differ depending on the product.



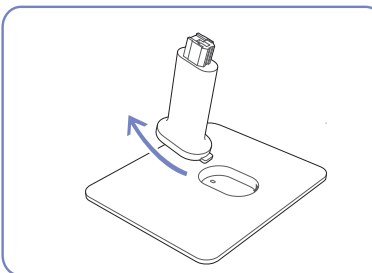
Place a soft cloth over the table to protect the product and place the product onto the cloth so that the front of the product faces downwards.



While holding the stand neck with one hand, pound the other fistful hand down onto the top of the stand base in the direction of the arrow to detach the stand base.



Turn the connecting screw at the bottom of the stand base to separate it.

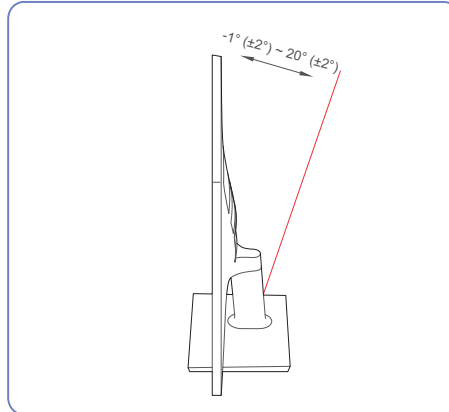


Remove the stand neck from the stand base by pulling it in the direction of the arrow as shown in the figure.

1.3.3 Adjusting the Product Tilt



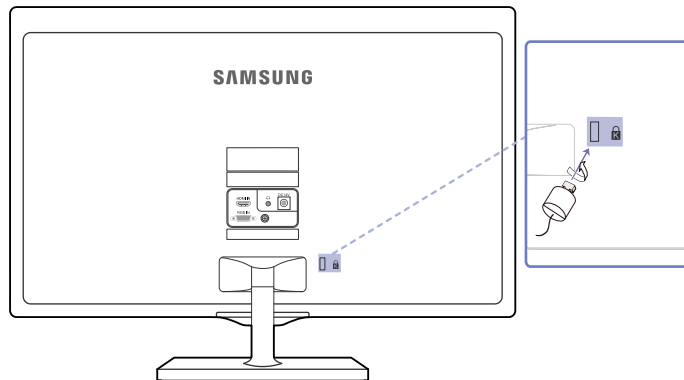
The color and shape of parts may differ from what is shown. Specifications are subject to change without notice to improve quality.



- You can adjust the tilt of your monitor.
- Hold the lower part of the product and adjust the tilt carefully.

1.3.4 Anti-theft Lock

An anti-theft lock allows you to use the product securely even in public places. The locking device shape and locking method depend on the manufacturer. Refer to the user guide provided with your anti-theft locking device for details. The lock device is sold separately.



The color and shape of parts may differ from what is shown. Specifications are subject to change without notice to improve quality.

To lock an anti-theft locking device:

- 1 Fix the cable of your anti-theft locking device to a heavy object such as a desk.
- 2 Put one end of the cable through the loop on the other end.
- 3 Insert the Kensington Lock into the security slot on the back of the display.
- 4 Lock the locking device.



- An anti-theft locking device can be purchased separately.
- Refer to the user guide provided with your anti-theft locking device for details.
- Anti-theft locking devices can be purchased at electronics retailers or online.


2.1 Before Connecting

2.1.1 Pre-connection Checkpoints

- Before connecting a source device, read the user manual provided with it.
The number and locations of ports on source devices may differ from device to device.
- Do not connect the power cable until all connections are completed.
Connecting the power cable during connection may damage the product.
- Check the types of ports at the back of the product you want to connect.

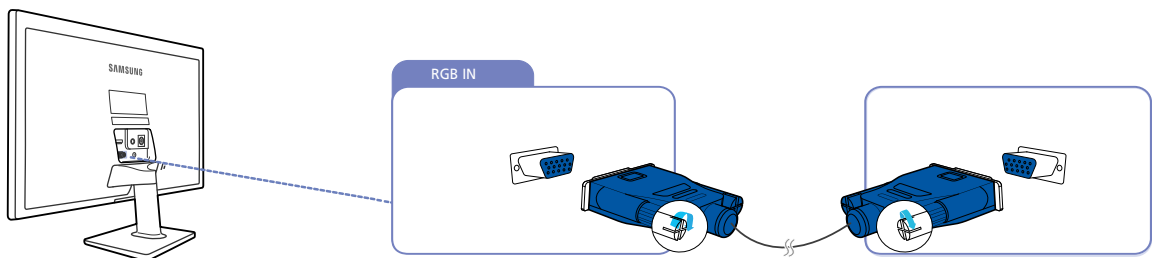
2.2 Connecting and Using a PC

2.2.1 Connecting to a PC

- Select a connection method suitable for your PC.
- 
 - Connecting parts may differ in different products.
 - The exterior may differ depending on the product.

Connection Using the D-SUB Cable (Analogue Type)

- 
 - Do not connect the power cable before connecting all other cables.
Ensure you connect a source device first before connecting the power cable.

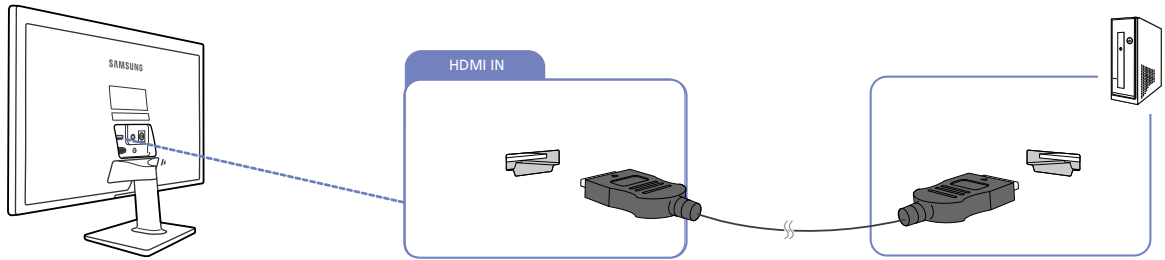


- 1 Connect the D-SUB cable to the [RGB IN] port on the back of the product and the RGB port on the PC.
- 2 Connect the DC power adapter to the product and a power socket. Next, turn on the power switch on the PC. (For details, refer to "2.2.3 Connecting the Power".)
- 3 Press [⏏/⏏] to change the input source to **Analog**.

Connection Using the HDMI Cable



Do not connect the power cable before connecting all other cables.
Ensure you connect a source device first before connecting the power cable.

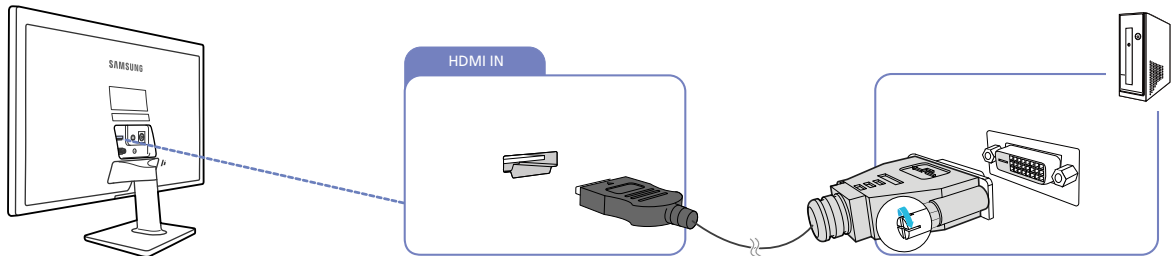


- 1 Connect the HDMI cable to the [HDMI IN] port on the back of the product and the HDMI port on the PC.
- 2 Connect the DC power adapter to the product and a power socket. Next, turn on the power switch on the PC. (For details, refer to "2.2.3 Connecting the Power".)
- 3 Press [⏏/⏏] to change the input source to **HDMI**.

Connection Using an HDMI-DVI Cable



Do not connect the power cable before connecting all other cables.
Ensure you connect a source device first before connecting the power cable.

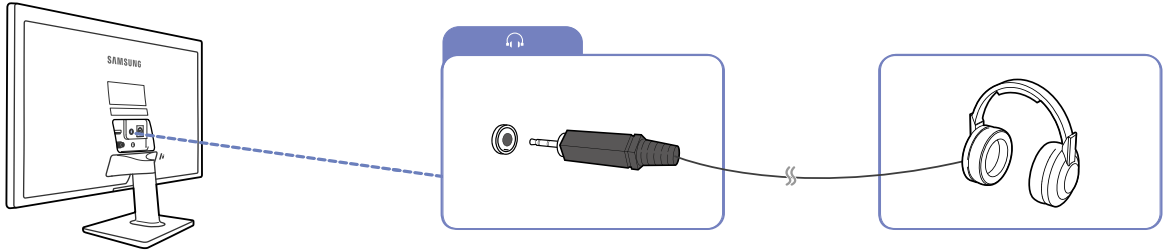


- 1 Connect the HDMI-DVI cable to the [HDMI IN] port on the back of the product and the DVI port on the PC.
- 2 Connect the DC power adapter to the product and a power socket. Next, turn on the power switch on the PC. (For details, refer to "2.2.3 Connecting the Power".)
- 3 Press [⏏/⏏] to change the input source to **HDMI**.

2.2.2 Connecting to Headphones



- Do not connect the power cable before connecting all other cables.
Ensure you connect a source device first before connecting the power cable.



- 1 Connect an audio output device such as headphones to [🎧] port on the product.



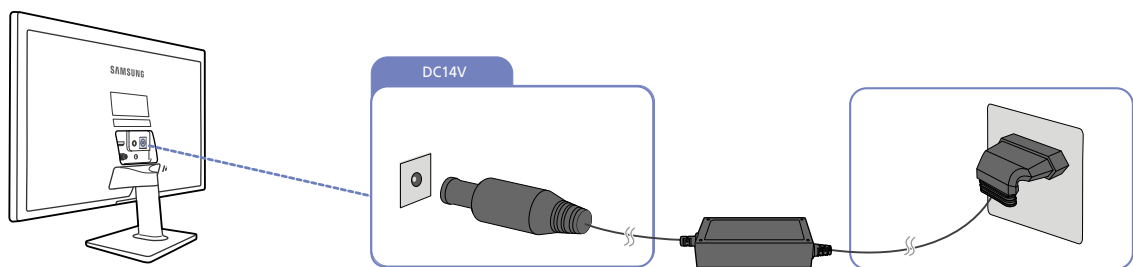
- This function is only available in **HDMI** mode.
- The sound could only be heard when using the HDMI-to-HDMI cable.

2.2.3 Connecting the Power

- Connecting parts may differ in different products.
- The exterior may differ depending on the product.

Power connection using integrated DC power adapter

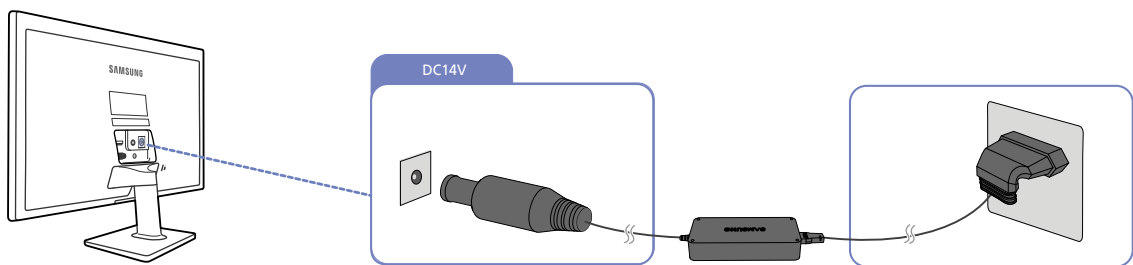
- Connect the DC power adapter to the [DC14V] port on the back of the product and to the power outlet.



- The input voltage is switched automatically.

Power connection using detachable DC power adapter

- Connect the power cable to the DC power adapter. Then, connect the DC power adapter to the [DC14V] port on the back of the product. Next, connect the power cable to the power outlet.



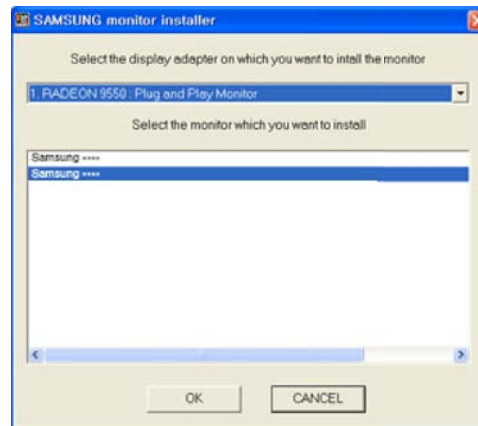
- The input voltage is switched automatically.

2.2.4 Driver Installation



- You can set the optimum resolution and frequency for this product by installing the corresponding drivers.
- An installation driver is contained on the CD supplied with the product.
- If the file provided is faulty, visit the Samsung homepage (<http://www.samsung.com/>) and download the file.

- 1 Insert the user manual CD provided with the product into the CD-ROM drive.
- 2 Click "Windows Driver".
- 3 Follow the instructions given on the screen to proceed with installation.
- 4 Select your product model from the list of models.

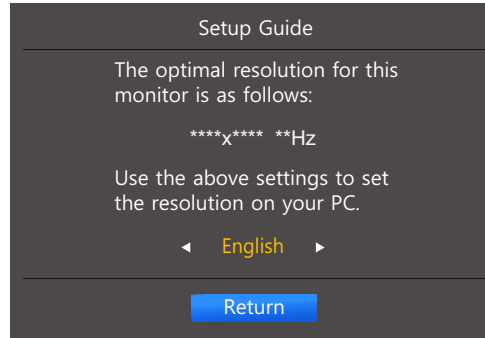


- 5 Go to Display Properties and check that the resolution and refresh rate are appropriate. Refer to your Windows OS manual for further details.

2.2.5 Setting Optimum Resolution

An information message about setting optimum resolution will appear if you power on the product for the first time after purchase.

Select a language on the product and change the resolution on your PC to the optimum setting.



1 Press [\blacktriangle / \blacktriangledown] to move to the language you want and press [\square / \boxtimes].

2 To hide the information message, press [MENU] or [\square / \boxtimes].



- If the optimum resolution is not selected, the message will appear up to three times for a specified time even when the product is turned off and on again.
- The optimum resolution can also be selected in **Control Panel** on your PC.

3

Screen Setup

Configure the screen settings such as brightness.

A detailed description of each function is provided. Refer to your product for details.

3.1 Brightness

You can adjust the general brightness of the picture. (Range: 0~100)

A higher value will make the picture appear brighter.

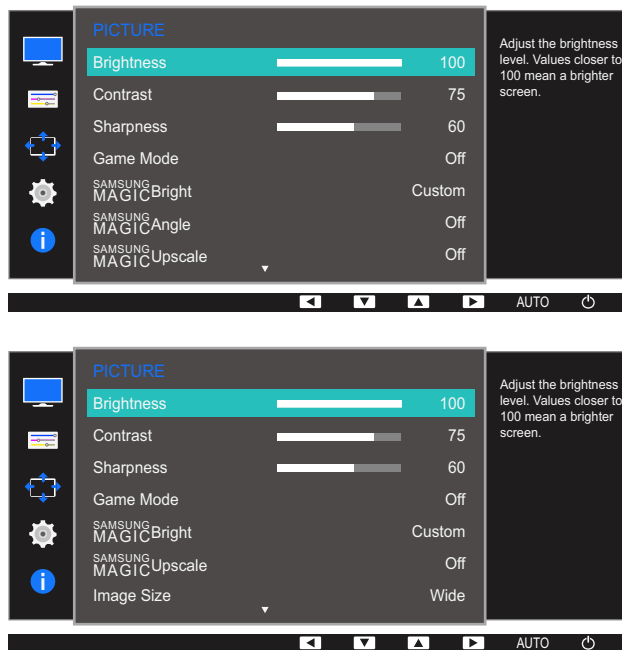


- This menu is not available when **SAMSUNG MAGICBright** is set to **Dynamic Contrast** mode.
- This menu is not available when **Eco Saving** is enabled.
- The functions available on the monitor may vary depending on the model. Refer to the actual product.

3.1.1 Configuring Brightness

- 1 Press any button on the front of the product to display the Key guide. Next, press [MENU] to display the corresponding menu screen.
- 2 Press [▲/▼] to move to **PICTURE** and press [□/⊞] on the product.
- 3 Press [▲/▼] to move to **Brightness** and press [□/⊞] on the product.

The following screen will appear.



- 4 Adjust the **Brightness** using the [▲/▼] buttons.
- 5 The selected option will be applied.

3.2 Contrast

Adjust the contrast between the objects and background. (Range: 0~100)

A higher value will increase the contrast to make the object appear clearer.



- This option is not available when **SAMSUNG MAGICBright** is in **Cinema** or **Dynamic Contrast** mode.
- This menu is not available when **Game Mode** is enabled.
- The functions available on the monitor may vary depending on the model. Refer to the actual product.

3.2.1 Configuring Contrast

- 1 Press any button on the front of the product to display the Key guide. Next, press **[MENU]** to display the corresponding menu screen.
- 2 Press **[▲/▼]** to move to **PICTURE** and press **[□/⊞]** on the product.
- 3 Press **[▲/▼]** to move to **Contrast** and press **[□/⊞]** on the product.

The following screen will appear.



- 4 Adjust the **Contrast** using the **[▲/▼]** buttons.
- 5 The selected option will be applied.

3.3 Sharpness

Make the outline of objects more clear or blurry. (Range: 0~100)

A higher value will make the outline of objects clearer.



- This option is not available when **SAMSUNG MAGICBright** is in **Cinema** or **Dynamic Contrast** mode.
- This menu is not available when **SAMSUNG MAGICUpscale** is in **Mode1** or **Mode2**.
- This menu is not available when **Game Mode** is enabled.
- The functions available on the monitor may vary depending on the model. Refer to the actual product.

3.3.1 Configuring Sharpness

- 1 Press any button on the front of the product to display the Key guide. Next, press [MENU] to display the corresponding menu screen.
- 2 Press [▲/▼] to move to **PICTURE** and press [□/⊞] on the product.
- 3 Press [▲/▼] to move to **Sharpness** and press [□/⊞] on the product.
The following screen will appear.



- 4 Adjust the **Sharpness** using the [▲/▼] buttons.
- 5 The selected option will be applied.

3.4 Game Mode

Configure the product screen settings for game mode.

Use this feature when playing games on a PC or when a game console such as PlayStation™ or Xbox™ is connected.

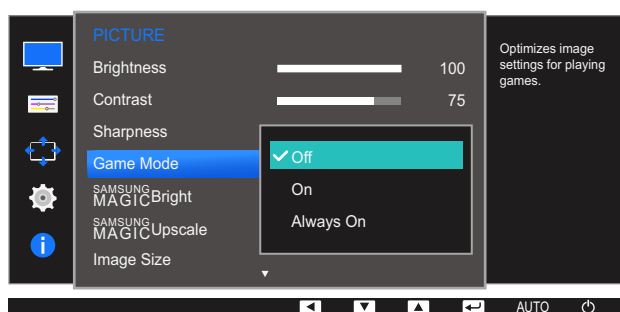
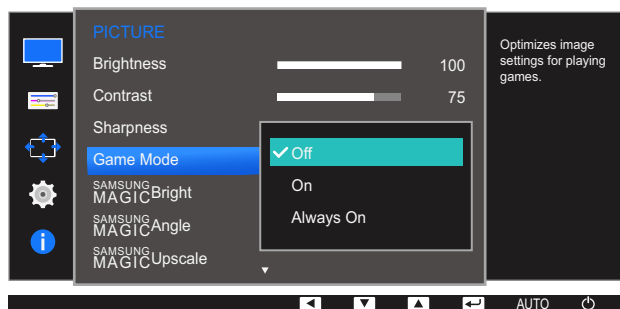


The functions available on the monitor may vary depending on the model. Refer to the actual product.

3.4.1 Configuring Game Mode

- 1 Press any button on the front of the product to display the Key guide. Next, press [MENU] to display the corresponding menu screen.
- 2 Press [▲/▼] to move to **PICTURE** and press [□/⊞] on the product.
- 3 Press [▲/▼] to move to **Game Mode** and press [□/⊞] on the product.

The following screen will appear.



- 4 Press [▲/▼] to move to the option you want and press [□/⊞].
- 5 The selected option will be applied.



- When the monitor turns off, enters power-saving mode or changes input sources, **Game Mode** turns **Off** even if it is set to **On**.
- If you want to keep **Game Mode** enabled all the time, select **Always On**.

3.5 SAMSUNG MAGIC Bright

This menu provides an optimum picture quality suitable for the environment where the product will be used.

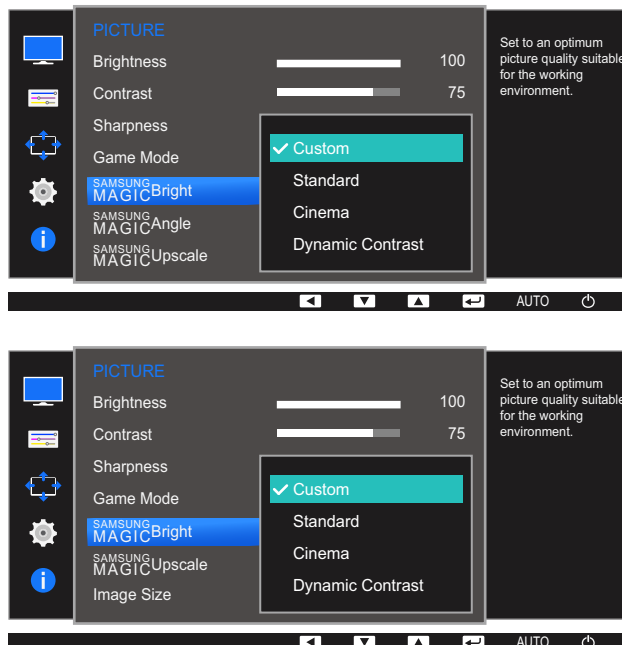


- This menu is not available when **Eco Saving** is enabled.
- This menu is not available when **SAMSUNG MAGIC Angle** is enabled.
- This menu is not available when **Game Mode** is enabled.
- The functions available on the monitor may vary depending on the model. Refer to the actual product.

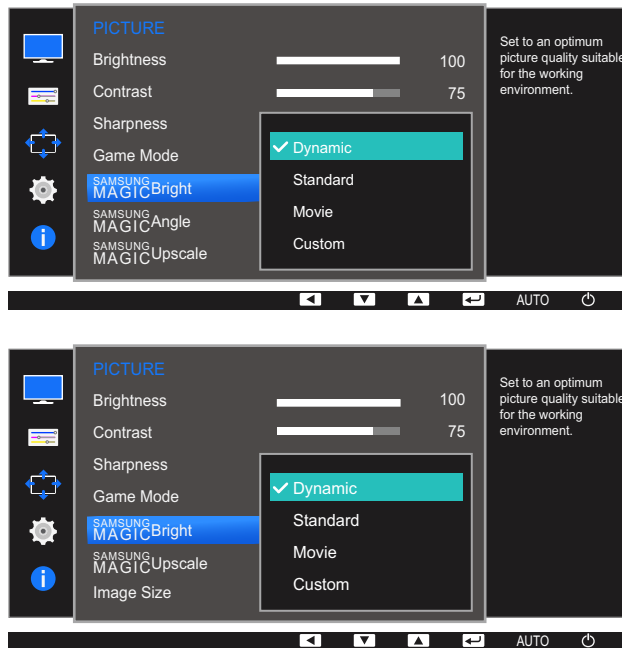
You can customize the brightness to suit your preferences.

3.5.1 Configuring SAMSUNG MAGIC Bright

- 1 Press any button on the front of the product to display the Key guide. Next, press **[MENU]** to display the corresponding menu screen.
- 2 Press **[▲/▼]** to move to **PICTURE** and press **[□/⊞]** on the product.
- 3 Press **[▲/▼]** to move to **SAMSUNG MAGIC Bright** and press **[□/⊞]** on the product.
The following screen will appear.



- **Custom:** Customize the contrast and brightness as required.
- **Standard:** Obtain a picture quality suitable for editing documents or using Internet.
- **Cinema:** Obtain the brightness and sharpness of TVs suitable for enjoying video and DVD content.
- **Dynamic Contrast:** Obtain balanced brightness through automatic contrast adjustment.



When the external input is connected through HDMI and **PC/AV Mode** is set to **AV**, **SAMSUNG MAGICBright** has four automatic picture settings (**Dynamic**, **Standard**, **Movie** and **Custom**) that are preset at the factory. You can activate either **Dynamic**, **Standard**, **Movie** or **Custom**. You can select **Custom** which automatically recalls your personalized picture settings.

- **Dynamic**: Select this mode to view a sharper image than in **Standard** mode.
- **Standard**: Select this mode when the surroundings are bright. This also provides a sharp image.
- **Movie**: Select this mode when the surroundings are dark. This will save power and reduce eye fatigue.
- **Custom**: Select this mode when you want to adjust the image according to your preferences.

4 Press [**▲**/**▼**] to move to the option you want and press [**□**/**↵**].

5 The selected option will be applied.

3.6 SAMSUNG MAGIC Angle (S22D390H / S22D393H)

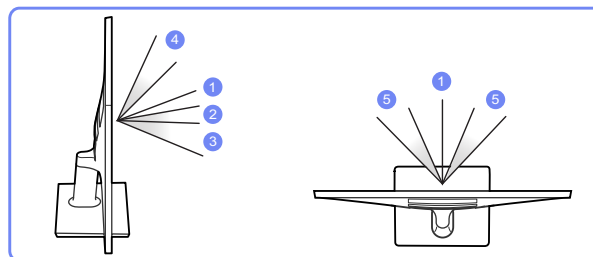
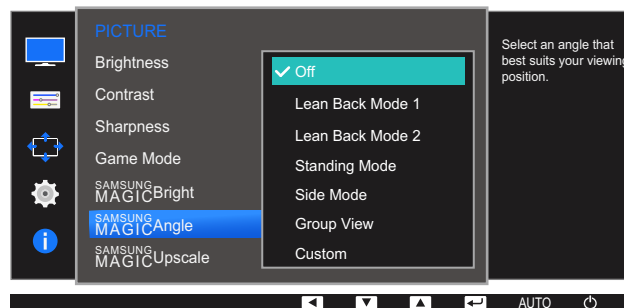
SAMSUNG MAGIC Angle allows you to configure the settings to obtain the optimum picture quality according to your viewing angle.

- This option is not available when **SAMSUNG MAGIC Bright** is in **Cinema** or **Dynamic Contrast** mode.
- This menu is not available when **Game Mode** is enabled.
- The functions available on the monitor may vary depending on the model. Refer to the actual product.

This feature provides the viewing angle, brightness, and tint to suit your preferences.

3.6.1 Configuring SAMSUNG MAGIC Angle

- 1 Press any button on the front of the product to display the Key guide. Next, press **[MENU]** to display the corresponding menu screen.
- 2 Press **[▲/▼]** to move to **PICTURE** and press **[□/⊞]** on the product.
- 3 Press **[▲/▼]** to move to **SAMSUNG MAGIC Angle** and press **[□/⊞]** on the product.
The following screen will appear.



- **Off** ①: Select this option to view directly in front of the product.
- **Lean Back Mode 1** ②: Select this option to view from a place slightly lower than the product.
- **Lean Back Mode 2** ③: Select this option to view from a place lower than Lean Back Mode 1.
- **Standing Mode** ④: Select this option to view from a place higher than the product.
- **Side Mode** ⑤: Select this option to view from either side of the product.

- **Group View:** Select this option for more than one viewer to view from places ①, ④ and ⑤.
 - **Custom: Lean Back Mode 1** will be applied by default if **Custom** is selected.
- 4 Press [▲/▼] to move to the option you want and press [□/⊞].
 - 5 The selected option will be applied.

3.7 SAMSUNG MAGIC Upscale

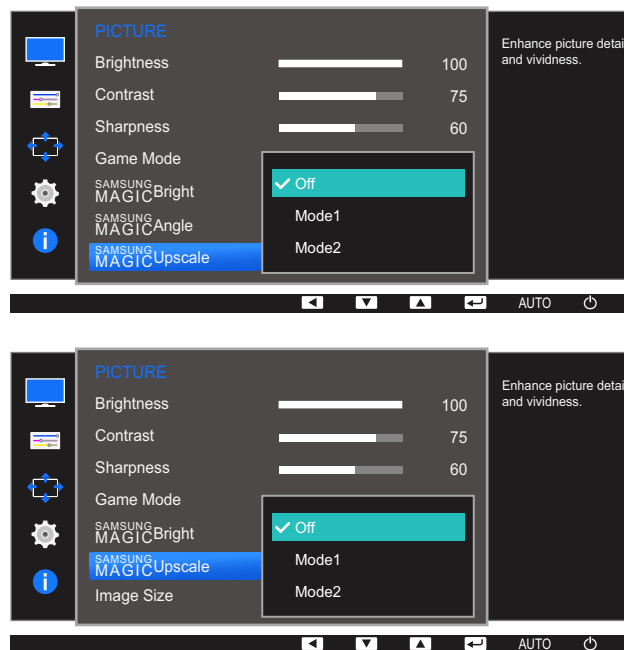
SAMSUNG MAGIC Upscale function can enhance the layers of the picture details and the vividness of the picture.



- The function has more obvious effects on low-resolution pictures.
- This menu is not available when **SAMSUNG MAGIC Bright** is in **Cinema** or **Dynamic Contrast** mode.
- This menu is not available when **Game Mode** is enabled.
- The functions available on the monitor may vary depending on the model. Refer to the actual product.

3.7.1 Configuring SAMSUNG MAGIC Upscale

- 1 Press any button on the front of the product to display the Key guide. Next, press **[MENU]** to display the corresponding menu screen.
- 2 Press **[▲/▼]** to move to **PICTURE** and press **[□/⊞]** on the product.
- 3 Press **[▲/▼]** to move to **SAMSUNG MAGIC Upscale** and press **[□/⊞]** on the product. The following screen will appear.



Comparing with **Mode1**, **Mode2** has a stronger effect.

- 4 Press **[▲/▼]** to move to the option you want and press **[□/⊞]**.
- 5 The selected option will be applied.

3.8 Image Size

Change the picture size.



The functions available on the monitor may vary depending on the model. Refer to the actual product.

3.8.1 Changing the Image Size

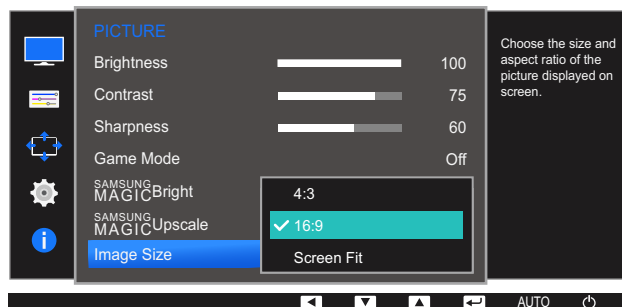
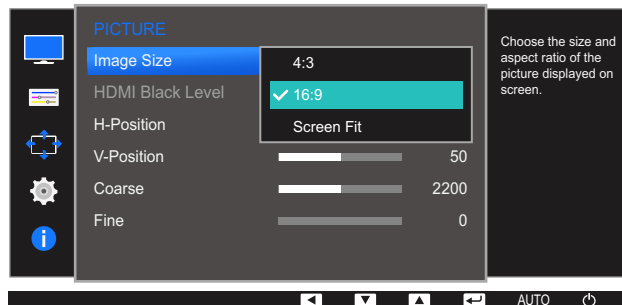
- 1 Press any button on the front of the product to display the Key guide. Next, press [MENU] to display the corresponding menu screen.
- 2 Press [▲/▼] to move to **PICTURE** and press [□/⏏] on the product.
- 3 Press [▲/▼] to move to **Image Size** and press [□/⏏] on the product. The following screen will appear.

In **PC** mode



- **Auto**: Display the picture according to the aspect ratio of the input source.
- **Wide**: Display the picture in full screen regardless of the aspect ratio of the input source.

In **AV** mode



- **4:3**: Display the picture with an aspect ratio of 4:3. Suitable for videos and standard broadcasts.
- **16:9**: Display the picture with an aspect ratio of 16:9.
- **Screen Fit**: Display the picture with the original aspect ratio without cutting off.



- Changing the screen size is available when the following conditions are satisfied.
- The function may not be supported depending on the ports provided with the product.
 - A digital output device is connected using the HDMI cable.
 - The input signal is 480p, 576p, 720p, or 1080p and monitor can display normally (Not every model can support all of these signals.).
 - This can only be set when the external input is connected through HDMI and **PC/AV Mode** is set to **AV**.

4 Press [**▲/▼**] to move to the option you want and press [**□/⏏**].

5 The selected option will be applied.

3.9 HDMI Black Level

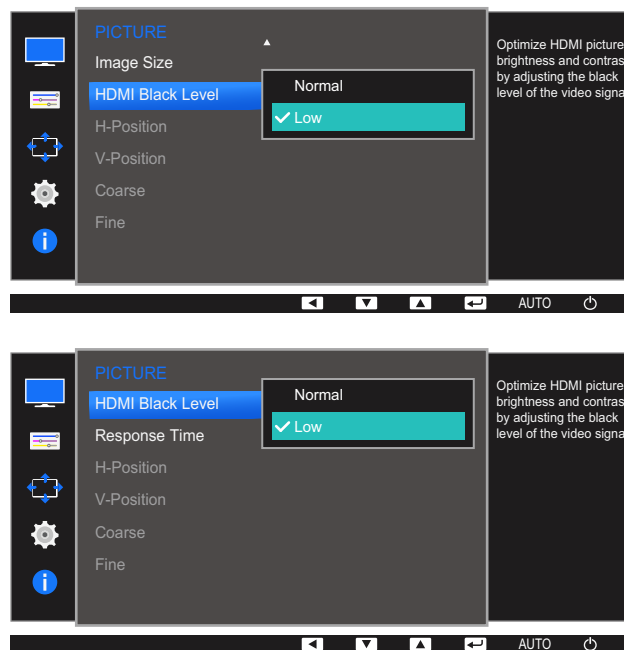
If a DVD player or set-top box is connected to the product via HDMI, image quality degradation (contrast/color degradation, black level, etc.) may occur, depending on the connected source device. In such case, **HDMI Black Level** can be used to adjust the image quality. If this is the case, correct the degraded picture quality using **HDMI Black Level**.



- This function is only available in **HDMI** mode.
- The functions available on the monitor may vary depending on the model. Refer to the actual product.

3.9.1 Configuring the HDMI Black Level Settings

- 1 Press any button on the front of the product to display the Key guide. Next, press **[MENU]** to display the corresponding menu screen.
- 2 Press **[▲/▼]** to move to **PICTURE** and press **[□/⊞]** on the product.
- 3 Press **[▲/▼]** to move to **HDMI Black Level** and press **[□/⊞]** on the product. The following screen will appear.



- **Normal**: Select this mode when there is no contrast ratio degradation.
 - **Low**: Select this mode to reduce the black level and increase the white level when there is a contrast ratio degradation.
- 4 Press **[▲/▼]** to move to the option you want and press **[□/⊞]**.
 - 5 The selected option will be applied.



- **HDMI Black Level** may not be compatible with some source devices.

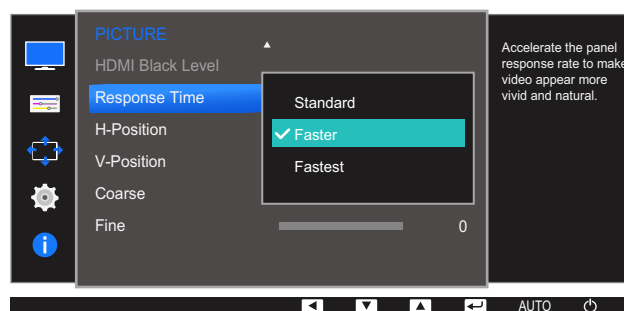
3.10 Response Time (S24D390HL / S24D393HL / S27D390H / S27D393H)

Accelerate the panel response rate to make video appear more vivid and natural.

- It is best to set **Response Time** to **Standard** or **Faster** when you are not viewing a movie.
- The functions available on the monitor may vary depending on the model. Refer to the actual product.

3.10.1 Configuring the Response Time

- 1 Press any button on the front of the product to display the Key guide. Next, press **[MENU]** to display the corresponding menu screen.
- 2 Press **[▲/▼]** to move to **PICTURE** and press **[□/⊞]** on the product.
- 3 Press **[▲/▼]** to move to **Response Time** and press **[□/⊞]** on the product. The following screen will appear.



- 4 Press **[▲/▼]** to move to the option you want and press **[□/⊞]**.
- 5 The selected option will be applied.

3.11 H-Position & V-Position

H-Position: Move the screen to the left or right.

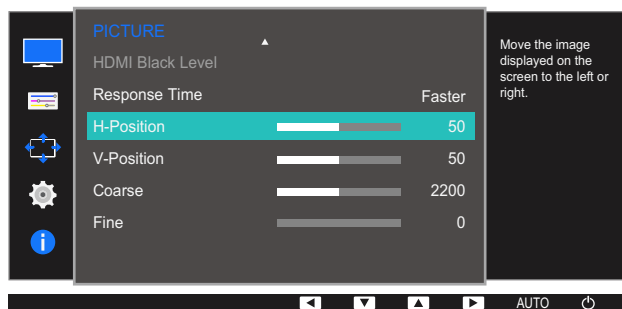
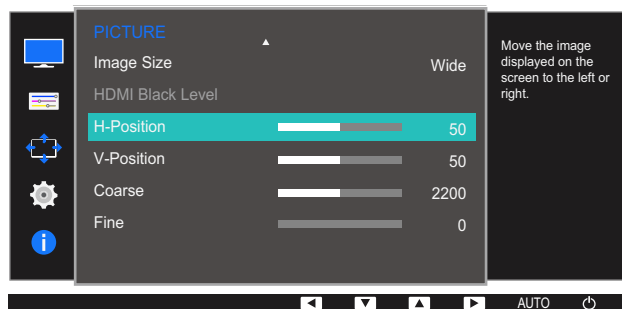
V-Position: Move the screen up or down.



- This menu is available in **Analog** mode only.
- This menu is only available when **Image Size** is set to **Screen Fit** in **AV** Mode. When a 480P or 576P or 720P or 1080P signal is input in **AV** mode and the monitor can display normally, select **Screen Fit** to adjust horizontal position in 0-6 levels.
- The functions available on the monitor may vary depending on the model. Refer to the actual product.

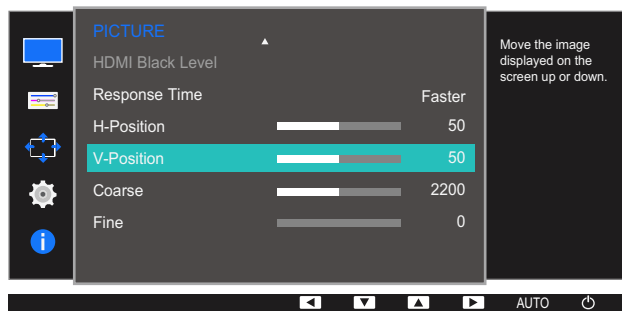
3.11.1 Configuring H-Position & V-Position

- 1 Press any button on the front of the product to display the Key guide. Next, press **[MENU]** to display the corresponding menu screen.
- 2 Press **[▲/▼]** to move to **PICTURE** and press **[□/⊞]** on the product.
- 3 Press **[▲/▼]** to move to **H-Position** or **V-Position**, and press **[□/⊞]**.
The following screen will appear.



3

Screen Setup



- 4 Press [**▲**/**▼**] to configure **H-Position** or **V-Position**.
- 5 The selected option will be applied.

3.12 Coarse

Adjust the screen frequency.

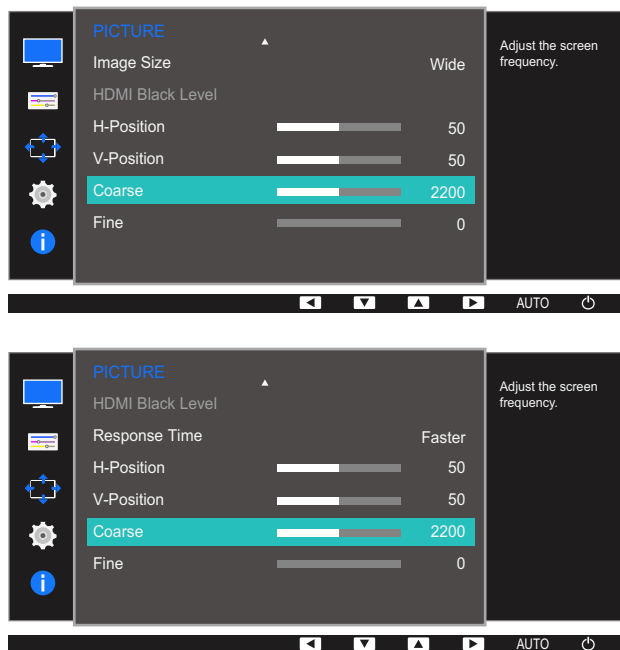


- This menu is available in **Analog** mode only.
- The functions available on the monitor may vary depending on the model. Refer to the actual product.

3.12.1 Adjusting Coarse

- 1 Press any button on the front of the product to display the Key guide. Next, press **[MENU]** to display the corresponding menu screen.
- 2 Press **[▲/▼]** to move to **PICTURE** and press **[□/⊞]** on the product.
- 3 Press **[▲/▼]** to move to **Coarse** and press **[□/⊞]** on the product.

The following screen will appear.



- 4 Adjust the **Coarse** using the **[▲/▼]** buttons.
- 5 The selected option will be applied.

3.13 Fine

Fine-adjust the screen to obtain a vivid picture.

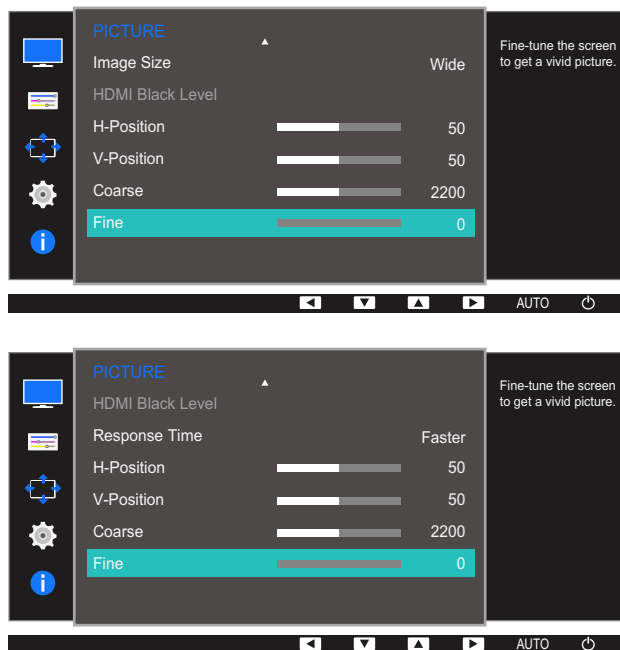


- This menu is available in **Analog** mode only.
- The functions available on the monitor may vary depending on the model. Refer to the actual product.

3.13.1 Adjusting Fine

- 1 Press any button on the front of the product to display the Key guide. Next, press [MENU] to display the corresponding menu screen.
- 2 Press [▲/▼] to move to **PICTURE** and press [□/⊞] on the product.
- 3 Press [▲/▼] to move to **Fine** and press [□/⊞] on the product.

The following screen will appear.



- 4 Adjust the **Fine** using the [▲/▼] buttons.
- 5 The selected option will be applied.

4

Configuring Tint

A detailed description of each function is provided. Refer to your product for details.

Adjust the tint of the screen. This menu is not available when **SAMSUNG MAGICBright** is set to **Cinema** or **Dynamic Contrast** mode. This menu is not available when **Game Mode** is enabled.

4.1 Red

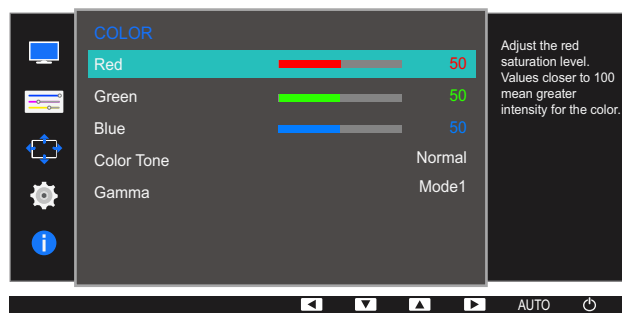
Adjust the value of the color red in the picture. (Range: 0~100)

A higher value will increase the intensity of the color.

4.1.1 Configuring Red

- 1 Press any button on the front of the product to display the Key guide. Next, press [MENU] to display the corresponding menu screen.
- 2 Press [▲/▼] to move to **COLOR** and press [↔/↔] on the product.
- 3 Press [▲/▼] to move to **Red** and press [↔/↔] on the product.

The following screen will appear.



- 4 Adjust the **Red** using the [▲/▼] buttons.
- 5 The selected option will be applied.

4.2 Green

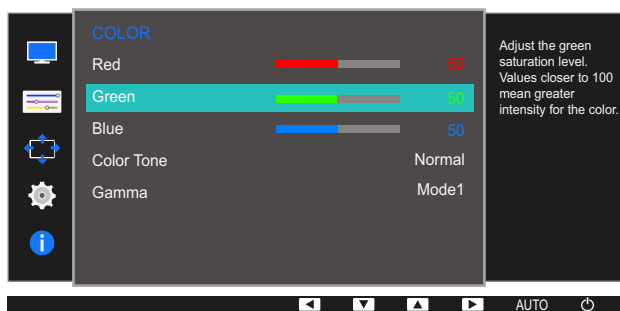
Adjust the value of the color green in the picture. (Range: 0~100)

A higher value will increase the intensity of the color.

4.2.1 Configuring Green

- 1 Press any button on the front of the product to display the Key guide. Next, press [MENU] to display the corresponding menu screen.
- 2 Press [▲/▼] to move to **COLOR** and press [⏪/⏩] on the product.
- 3 Press [▲/▼] to move to **Green** and press [⏪/⏩] on the product.

The following screen will appear.



- 4 Adjust the **Green** using the [▲/▼] buttons.
- 5 The selected option will be applied.

4.3 Blue

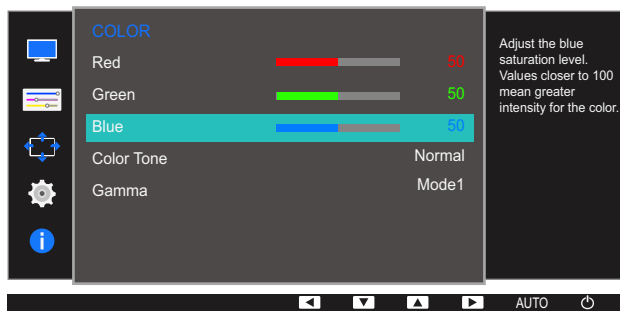
Adjust the value of the color blue in the picture. (Range: 0~100)

A higher value will increase the intensity of the color.

4.3.1 Configuring Blue

- 1 Press any button on the front of the product to display the Key guide. Next, press [MENU] to display the corresponding menu screen.
- 2 Press [▲/▼] to move to **COLOR** and press [□/⊞] on the product.
- 3 Press [▲/▼] to move to **Blue** and press [□/⊞] on the product.

The following screen will appear.



- 4 Adjust the **Blue** using the [▲/▼] buttons.
- 5 The selected option will be applied.

4.4 Color Tone

Adjust the general color tone of the picture.

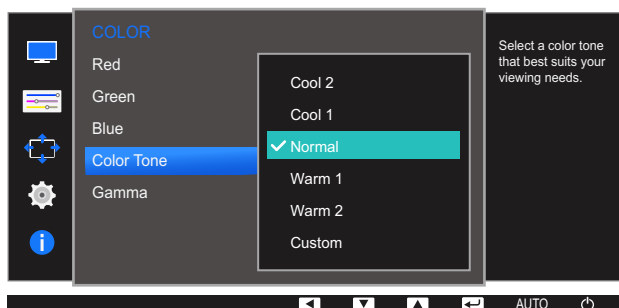


- This menu is not available when **SAMSUNG MAGIC Angle** is enabled.
- This option is not available when **SAMSUNG MAGIC Bright** is in **Cinema** or **Dynamic Contrast** mode.
- This menu is not available when **Game Mode** is enabled.
- The functions available on the monitor may vary depending on the model. Refer to the actual product.

4.4.1 Configuring the Color Tone Settings

- 1 Press any button on the front of the product to display the Key guide. Next, press [MENU] to display the corresponding menu screen.
- 2 Press [▲/▼] to move to **COLOR** and press [□/⏏] on the product.
- 3 Press [▲/▼] to move to **Color Tone** and press [□/⏏] on the product.

The following screen will appear.



- **Cool 2:** Set the color temperature to be cooler than **Cool 1**.
- **Cool 1:** Set the color temperature to be cooler than **Normal** mode.
- **Normal:** Display the standard color tone.
- **Warm 1:** Set the color temperature to be warmer than **Normal** mode.
- **Warm 2:** Set the color temperature to be warmer than **Warm 1**.
- **Custom:** Customize the color tone.



When the external input is connected through HDMI and **PC/AV Mode** is set to **AV**, **Color Tone** has four color temperature settings (**Cool**, **Normal**, **Warm** and **Custom**).

- 4 Press [▲/▼] to move to the option you want and press [□/⏏].
- 5 The selected option will be applied.

4.5 Gamma

Adjust the mid-range brightness (Gamma) of the picture.

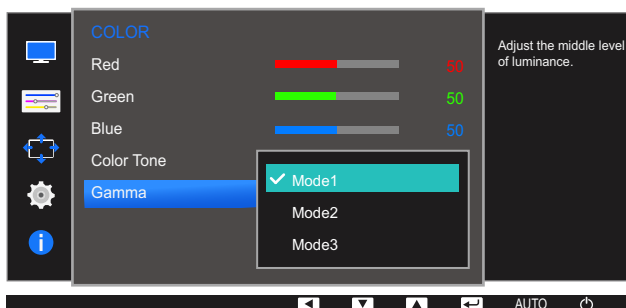


- This menu is not available when **SAMSUNG MAGIC Angle** is enabled.
- This option is not available when **SAMSUNG MAGIC Bright** is in **Cinema** or **Dynamic Contrast** mode.
- This menu is not available when **Game Mode** is enabled.
- The functions available on the monitor may vary depending on the model. Refer to the actual product.

4.5.1 Configuring Gamma

- 1 Press any button on the front of the product to display the Key guide. Next, press [MENU] to display the corresponding menu screen.
- 2 Press [▲/▼] to move to **COLOR** and press [↔/↔] on the product.
- 3 Press [▲/▼] to move to **Gamma** and press [↔/↔] on the product.

The following screen will appear.



- 4 Press [▲/▼] to move to the option you want and press [↔/↔].
- 5 The selected option will be applied.

A detailed description of each function is provided. Refer to your product for details.

5.1 Language

Set the menu language.

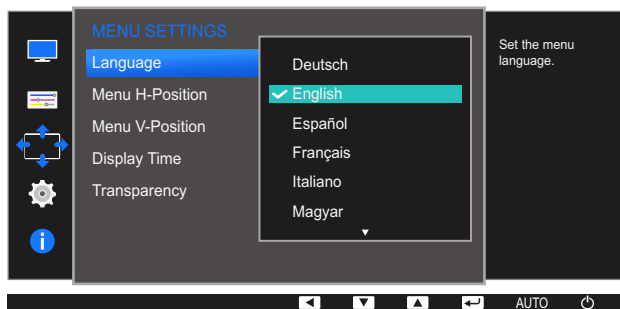


- A change to the language setting will only be applied to the onscreen menu display.
- It will not be applied to other functions on your PC.

5.1.1 Configuring Language

- 1 Press any button on the front of the product to display the Key guide. Next, press [MENU] to display the corresponding menu screen.
- 2 Press [▲/▼] to move to **MENU SETTINGS** and press [□/⇄] on the product.
- 3 Press [▲/▼] to move to **Language** and press [□/⇄] on the product.

The following screen will appear.



- 4 Press [▲/▼] to move to the language you want and press [□/⇄].
- 5 The selected option will be applied.

5.2 Menu H-Position & Menu V-Position

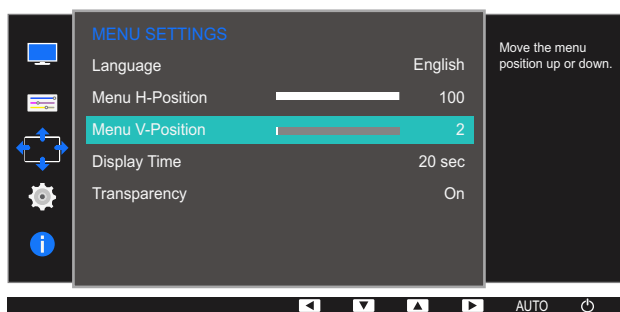
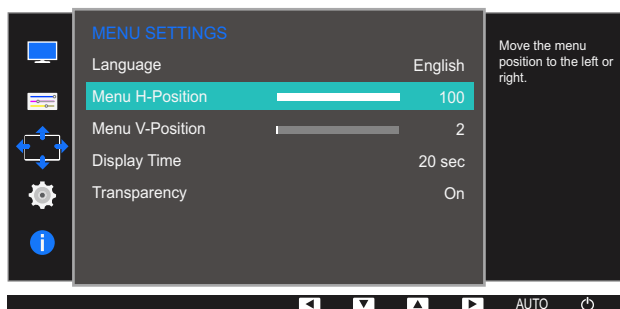
Menu H-Position: Move the menu position to the left or right.

Menu V-Position: Move the menu position up or down.

5.2.1 Configuring Menu H-Position & Menu V-Position

- 1 Press any button on the front of the product to display the Key guide. Next, press [MENU] to display the corresponding menu screen.
- 2 Press [▲/▼] to move to **MENU SETTINGS** and press [□/⇄] on the product.
- 3 Press [▲/▼] to move to **Menu H-Position** or **Menu V-Position**, and press [□/⇄] on the product.

The following screen will appear.



- 4 Press [▲/▼] to configure **Menu H-Position** or **Menu V-Position**.
- 5 The selected option will be applied.

5.3 Display Time

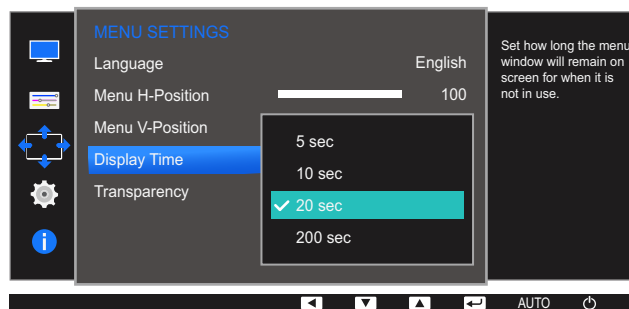
Set the on-screen display (OSD) menu to automatically disappear if the menu is not used for a specified period of time.

Display Time can be used to specify the time after which you want the OSD menu to disappear.

5.3.1 Configuring Display Time

- 1 Press any button on the front of the product to display the Key guide. Next, press **[MENU]** to display the corresponding menu screen.
- 2 Press **[▲/▼]** to move to **MENU SETTINGS** and press **[□/⊞]** on the product.
- 3 Press **[▲/▼]** to move to **Display Time** and press **[□/⊞]** on the product.

The following screen will appear.



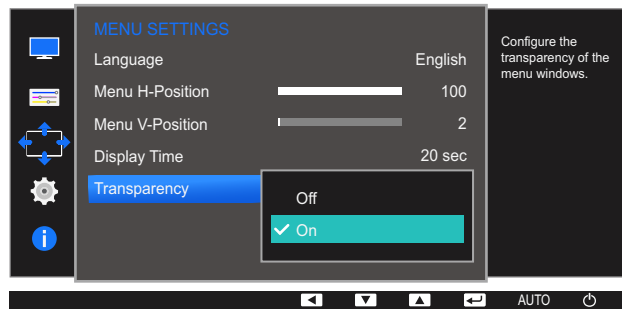
- 4 Press **[▲/▼]** to move to the option you want and press **[□/⊞]**.
- 5 The selected option will be applied.

5.4 Transparency

Set the transparency for the menu windows.

5.4.1 Changing Transparency

- 1 Press any button on the front of the product to display the Key guide. Next, press [MENU] to display the corresponding menu screen.
- 2 Press [▲/▼] to move to **MENU SETTINGS** and press [□/⏪] on the product.
- 3 Press [▲/▼] to move to **Transparency** and press [□/⏪] on the product.
The following screen will appear.



- 4 Press [▲/▼] to move to the option you want and press [□/⏪].
- 5 The selected option will be applied.

A detailed description of each function is provided. Refer to your product for details.

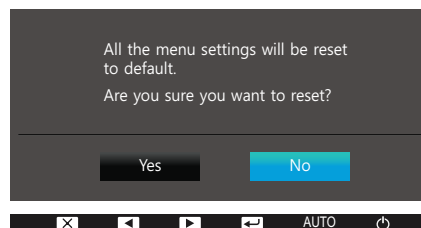
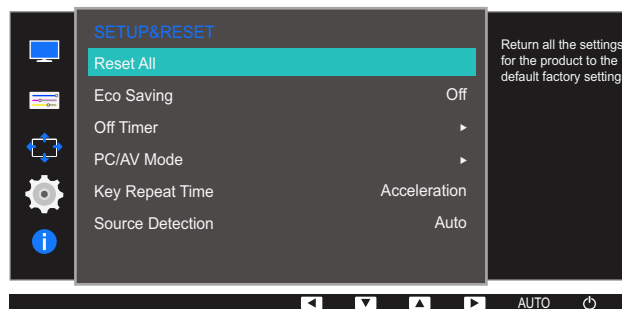
6.1 Reset All

Return all the settings for the product to the default factory settings.

6.1.1 Initializing Settings (Reset All)

- 1 Press any button on the front of the product to display the Key guide. Next, press **[MENU]** to display the corresponding menu screen.
- 2 Press **[▲/▼]** to move to **SETUP&RESET** and press **[□/□]** on the product.
- 3 Press **[▲/▼]** to move to **Reset All** and press **[□/□]** on the product.

The following screen will appear.



- 4 Press **[▲/▼]** to move to the option you want and press **[□/□]**.
- 5 The selected option will be applied.

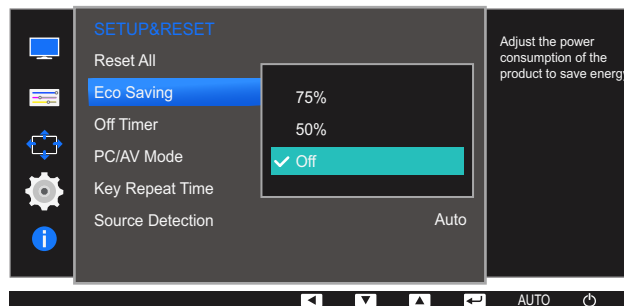
6.2 Eco Saving

The **Eco Saving** function reduces power consumption by controlling the electric current used by the monitor panel.

- This menu is not available when **SAMSUNG MAGICBright** is in **Dynamic Contrast** mode.
- This menu is not available when **Game Mode** is enabled.

6.2.1 Configuring Eco Saving

- 1 Press any button on the front of the product to display the Key guide. Next, press **[MENU]** to display the corresponding menu screen.
- 2 Press **[▲/▼]** to move to **SETUP&RESET** and press **[□/☞]** on the product.
- 3 Press **[▲/▼]** to move to **Eco Saving** and press **[□/☞]** on the product.
The following screen will appear.



- **75%**: Change the monitor power consumption to 75% of the default level.
 - **50%**: Change the monitor power consumption to 50% of the default level.
 - **Off**: Deactivate the **Eco Saving** function.
- 4 Press **[▲/▼]** to move to the option you want and press **[□/☞]**.
 - 5 The selected option will be applied.

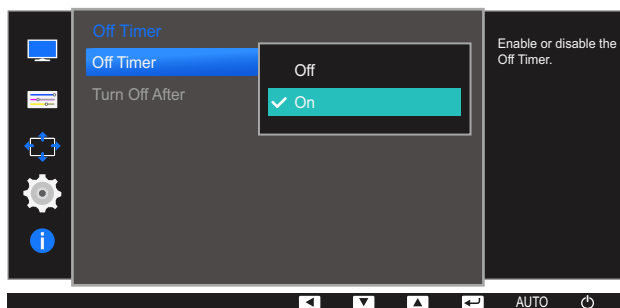
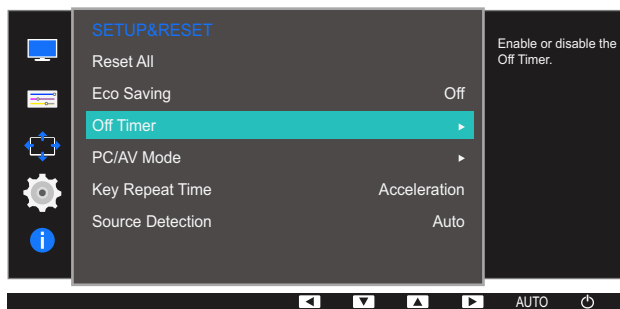
6.3 Off Timer

You can set the product to automatically turn off.

6.3.1 Configuring Off Timer

- 1 Press any button on the front of the product to display the Key guide. Next, press **[MENU]** to display the corresponding menu screen.
- 2 Press **[▲/▼]** to move to **SETUP&RESET** and press **[□/⊞]** on the product.
- 3 Press **[▲/▼]** to move to **Off Timer** and press **[□/⊞]** on the product.
- 4 Press **[▲/▼]** to move to **Off Timer** and press **[□/⊞]** on the product.

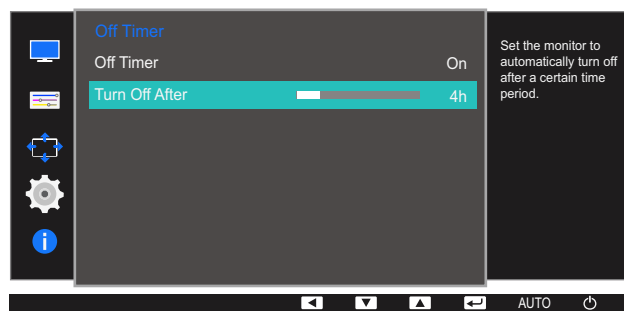
The following screen will appear.



- **Off:** Deactivate the off timer so that the product does not power off automatically.
 - **On:** Activate the off timer so that the product powers off automatically.
- 5 Press **[▲/▼]** to move to the option you want and press **[□/⊞]**.
 - 6 The selected option will be applied.

6.3.2 Configuring Turn Off After

- 1 Press any button on the front of the product to display the Key guide. Next, press [MENU] to display the corresponding menu screen.
- 2 Press [▲/▼] to move to **SETUP&RESET** and press [□/☞] on the product.
- 3 Press [▲/▼] to move to **Off Timer** and press [□/☞] on the product.
- 4 Press [▲/▼] to move to **Turn Off After** and press [□/☞] on the product. The following screen will appear.



- 5 Press [▲/▼] to configure **Turn Off After**.
- 6 The selected option will be applied.



- The off timer can be set within a range of 1 to 23 hours. The product will automatically power off after the specified number of hours.
- This option is only available when **Off Timer** is set to **On**.
- For products for the market in some regions, the **Off Timer** is set to automatically activate 4 hours after the product powers on. This is done in accordance with power supply regulations. If you do not want the timer to activate, go to **MENU** → **SETUP&RESET** and set **Off Timer** to **Off**.

6.4 PC/AV Mode

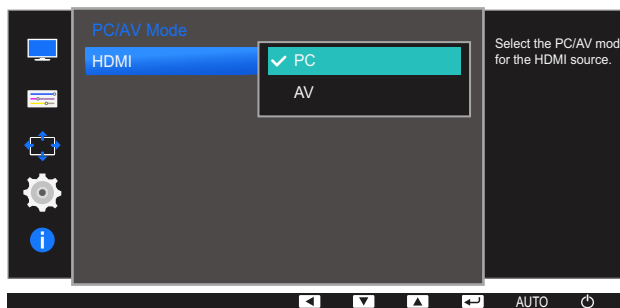
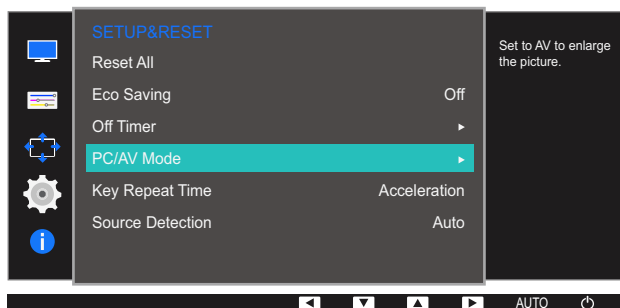
Set **PC/AV Mode** to **AV**. The picture size will be enlarged. This option is useful when you view a movie.



- This function does not support **Analog** mode.
- Supplied for the wide models only such as 16:9 or 16:10.
- If the monitor (when set to HDMI) is in power saving mode or is displaying the message **Check Signal Cable**, press the MENU button to display the On Screen Display(OSD). You can select **PC** or **AV**.

6.4.1 Configuring PC/AV Mode

- 1 Press any button on the front of the product to display the Key guide. Next, press [MENU] to display the corresponding menu screen.
- 2 Press [▲/▼] to move to **SETUP&RESET** and press [⏏/⏏] on the product.
- 3 Press [▲/▼] to move to **PC/AV Mode** and press [⏏/⏏] on the product.
- 4 Press [▲/▼] to move to **HDMI** and press [⏏/⏏] on the product. And press [⏏/⏏] again. The following screen will appear.



- 5 Press [▲/▼] to move to the option you want and press [⏏/⏏].
- 6 The selected option will be applied.

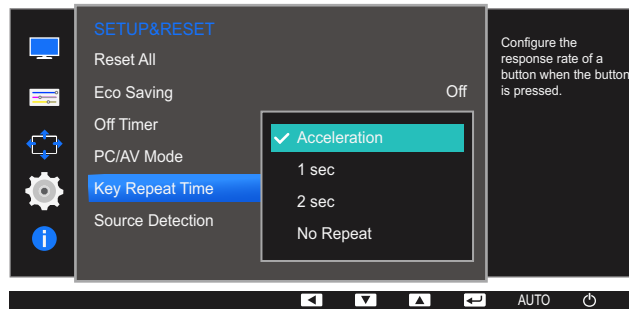
6.5 Key Repeat Time

Control the response rate of a button when the button is pressed.

6.5.1 Configuring Key Repeat Time

- 1 Press any button on the front of the product to display the Key guide. Next, press [MENU] to display the corresponding menu screen.
- 2 Press [▲/▼] to move to **SETUP&RESET** and press [□/☞] on the product.
- 3 Press [▲/▼] to move to **Key Repeat Time** and press [□/☞] on the product.

The following screen will appear.



- **Acceleration, 1 sec, or 2 sec** can be selected. If **No Repeat** is selected, a command responds only once when a button is pressed.
- 4 Press [▲/▼] to move to the option you want and press [□/☞].
 - 5 The selected option will be applied.

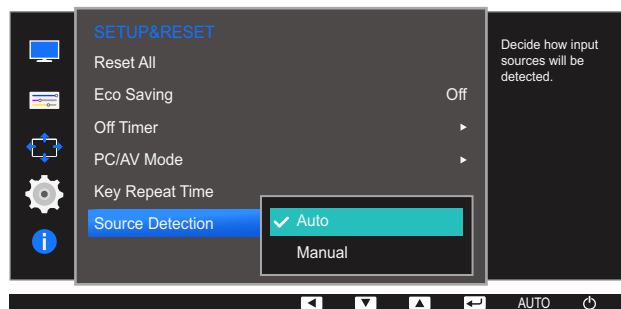
6.6 Source Detection

You can activate **Source Detection**.

6.6.1 Configuring Source Detection

- 1 Press any button on the front of the product to display the Key guide. Next, press [MENU] to display the corresponding menu screen.
- 2 Press [▲/▼] to move to **SETUP&RESET** and press [□/⊞] on the product.
- 3 Press [▲/▼] to move to **Source Detection** and press [□/⊞] on the product.

The following screen will appear.



- **Auto:** The input source is automatically recognized.
 - **Manual:** Manually select an input source.
- 4 Press [▲/▼] to move to the option you want and press [□/⊞].
 - 5 The selected option will be applied.

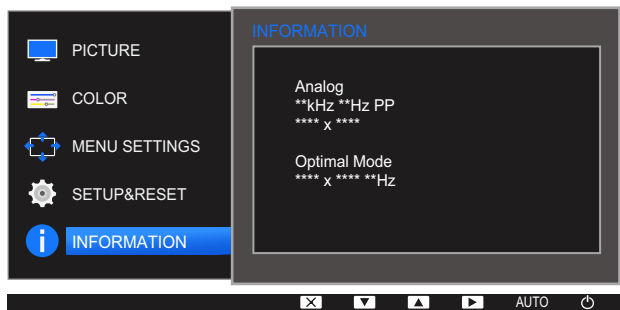
A detailed description of each function is provided. Refer to your product for details.

7.1 INFORMATION

View the current input source, frequency and resolution.

7.1.1 Displaying INFORMATION

- 1 Press any button on the front of the product to display the Key guide. Next, press **[MENU]** to display the corresponding menu screen.
- 2 Press **[▲/▼]** to move to **INFORMATION**. The current input source, frequency and resolution will appear.



The displayed menu items may vary depending on the model.

7.2 Configuring Brightness and Contrast in the Initial Screen

Adjust the **Brightness**, **Contrast** using the [:☉:] buttons when the initial screen (that displays no menu screen) is displayed.



Brightness :

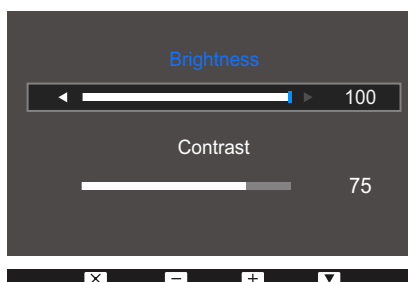
- This menu is not available when **SAMSUNG MAGICBright** is set to **Dynamic Contrast** mode.
- This menu is not available when **Eco Saving** is enabled.



Contrast :

- This option is not available when **SAMSUNG MAGICBright** is in **Cinema** or **Dynamic Contrast** mode.
- This menu is not available when **Game Mode** is enabled.

- 1 Press any button on the front of the product (when no menu screen is displayed) to display the Key guide. Next, press [:☉:]. The following screen will appear.



- 2 Press the [□/⇄] button to alternate between the **Brightness** and **Contrast** settings.
- 3 Adjust the **Brightness**, **Contrast** using the [▲/▼] buttons.

7.3 Configuring Volume in the Initial Screen

Adjust the **Volume** by pressing the [:◻:] button when the Key Guide is displayed.

- 1 Press any button on the front of the product (when no menu screen is displayed) to display the Key guide. Next, press [:◻:]. The following screen will appear.



- 2 Adjust the **Volume** setting using the [▲/▼] buttons.



- This function is only available in **HDMI** mode.
- The sound could only be heard when using the HDMI-to-HDMI cable.

8.1 Easy Setting Box



Easy Setting Box

"Easy Setting Box" enables users to use the monitor by partitioning multiple sections.

8.1.1 Installing the Software

- 1 Insert the installation CD into the CD-ROM drive.
- 2 Select the "Easy Setting Box" setup program.



If the pop-up screen for the software installation does not appear on the main screen, find and double-click the "Easy Setting Box" setup file on the CD-ROM.

- 3 When the Installation Wizard appears, click **Next**.
- 4 Follow the instructions given on the screen to proceed with installation.



- The software may not work properly if you do not restart the computer after the installation.
- The "Easy Setting Box" icon may not appear depending on the computer system and the product specifications.
- If the shortcut icon does not appear, press the F5 key.

Restrictions and Problems with the Installation ("Easy Setting Box")

The "Easy Setting Box" installation may be affected by the Graphics Card, Motherboard and the Networking Environment.

System Requirements

OS

- Windows XP 32Bit/64Bit
- Windows Vista 32Bit/64Bit
- Windows 7 32Bit/64Bit
- Windows 8 32Bit/64Bit

Hardware

- At least 32MB of memory
- At least 60MB of free space on the hard disk drive

8.1.2 Removing the Software

Click **Start**, select **Settings/Control Panel**, and then double-click **Add or Remove Programs**.

Select "Easy Setting Box" from the program list and click the **Add/Delete** button.

9.1 Requirements Before Contacting Samsung Customer Service Center

9.1.1 Testing the Product



Before calling Samsung Customer Service Center, test your product as follows. If the problem persists, contact Samsung Customer Service Center.

Check if your product is operating normally by using the product test function.

If the screen is turned off and the power indicator blinks even though the product is properly connected to a PC, perform a self-diagnosis test.

- 1 Power off both the PC and product.
- 2 Disconnect the cables from the product.
- 3 Power on the product.
- 4 If the message **Check Signal Cable** appears, the product is working normally.



If the screen remains blank, check the PC system, video controller and cable.

9.1.2 Checking the Resolution and Frequency

For a mode that exceeds the supported resolution (refer to "10.3 Standard Signal Mode Table"), the message **Not Optimum Mode** will appear for a short time.

9.1.3 Check the following.

Installation issue (PC mode)

| Issues | Solutions |
|--|---|
| The screen keeps switching on and off. | Check the cable connection between the product and PC, and ensure the connectors are locked. (Refer to "2.2 Connecting and Using a PC") |

Screen issue

| Issues | Solutions |
|---|---|
| The power LED is off. The screen will not switch on. | Check that the power cable is connected properly. (Refer to "2.2 Connecting and Using a PC") |
| The message Check Signal Cable appears. | Check that the cable is properly connected to the product. (Refer to "2.2 Connecting and Using a PC") |
| | Check that the device connected to the product is powered on. |
| Not Optimum Mode is displayed. | This message appears when the signal from the graphics card exceeds the maximum resolution or frequency for the product. Change the maximum resolution and frequency to suit the product performance, referring to Standard Signal Mode Table (page 80). |
| The images on the screen look distorted. | Check the cable connection to the product. (Refer to "2.2 Connecting and Using a PC") |
| The screen is not clear. The screen is blurry. | Adjust Coarse and Fine . Remove any accessories (video extension cable, etc.) and try again. Set the resolution and frequency to the recommended level. (Refer to "10.1 General") |
| The screen appears unstable and shaky. | Check that the resolution and frequency for the PC are within the range of resolution and frequency compatible with the product. |
| There are shadows or ghost images left on the screen. | Next, if required, change the settings, referring to Standard Signal Mode Table (page 80) in this manual and the INFORMATION menu on the product. |
| The screen is too bright. The screen is too dark. | Adjust Brightness and Contrast . |
| Screen color is inconsistent. | Change the COLOR settings. |
| The colors on the screen have a shadow and are distorted. | Change the COLOR settings. |
| White does not really look white. | Change the COLOR settings. |
| There is no image on the screen and the power LED blinks every 0.5 to 1 second. | The product is operating in power-saving mode. Press any key on the keyboard or move the mouse to return to normal operating mode. |

Sound issue

| Issues | Solutions |
|------------------------|---|
| There is no sound. | Check the connection of the audio cable or adjust the volume. |
| | Check the volume. |
| The volume is too low. | Adjust the volume. |
| | If the volume is still low after turning it up to the maximum level, adjust the volume on your PC sound card or software program. |

Source device issue

| Issues | Solutions |
|---|---|
| A beeping sound is heard when my PC is booting. | If a beeping sound is heard when your PC is booting, have your PC serviced. |



The LED lights on the frame of the product may be seen depending on the user's viewing angle. The light is harmless to people and has no bearing on product features and performance. The product is safe to use.

9.2 Q & A

| Question | Answer |
|---------------------------------|---|
| How can I change the frequency? | <p data-bbox="676 528 1150 562">Set the frequency on your graphics card.</p> <ul data-bbox="676 589 1465 1335" style="list-style-type: none"><li data-bbox="676 589 1465 696">• Windows XP: Go to Control Panel → Appearance and Themes → Display → Settings → Advanced → Monitor, and adjust Refresh rate under Monitor settings.<li data-bbox="676 719 1465 826">• Windows ME/2000: Go to Control Panel → Display → Settings → Advanced → Monitor, and adjust Refresh rate under Monitor settings.<li data-bbox="676 848 1465 999">• Windows Vista: Go to Control Panel → Appearance and Personalization → Personalization → Display Settings → Advanced Settings → Monitor, and adjust Refresh rate under Monitor settings.<li data-bbox="676 1021 1465 1171">• Windows 7: Go to Control Panel → Appearance and Personalization → Display → Screen Resolution → Advanced settings → Monitor, and adjust Refresh rate under Monitor settings.<li data-bbox="676 1193 1465 1335">• Windows 8: Go to Settings → Control Panel → Appearance and Personalization → Display → Screen Resolution → Advanced settings → Monitor, and adjust Refresh rate under Monitor settings. |

| Question | Answer |
|---|---|
| <p>How can I change the resolution?</p> | <ul style="list-style-type: none"> • Windows XP: Go to Control Panel → Appearance and Themes → Display → Settings, and adjust the resolution. • Windows ME/2000: Go to Control Panel → Display → Settings, and adjust the resolution. • Windows Vista: Go to Control Panel → Appearance and Personalization → Personalize → Display Settings, and adjust the resolution. • Windows 7: Go to Control Panel → Appearance and Personalization → Display → Adjust Resolution, and adjust the resolution. • Windows 8: Go to Settings → Control Panel → Appearance and Personalization → Display → Adjust Resolution, and adjust the resolution. |
| <p>How do I set power-saving mode?</p> | <ul style="list-style-type: none"> • Windows XP: Set power-saving mode in Control Panel → Appearance and Themes → Display → Screen Saver Settings or BIOS SETUP on the PC. • Windows ME/2000: Set power-saving mode in Control Panel → Display → Screen Saver Settings or BIOS SETUP on the PC. • Windows Vista: Set power-saving mode in Control Panel → Appearance and Personalization → Personalize → Screen Saver Settings or BIOS SETUP on the PC. • Windows 7: Set power-saving mode in Control Panel → Appearance and Personalization → Personalize → Screen Saver Settings or BIOS SETUP on the PC. • Windows 8: Set power-saving mode in Settings → Control Panel → Appearance and Personalization → Personalize → Screen Saver Settings or BIOS SETUP on the PC. |



Refer to the user manual for your PC or graphics card for further instructions on adjustment.



Specifications

10.1 General

| Model Name | | S22D390H / S22D393H | S24D390HL / S24D393HL | S27D390H / S27D393H |
|---------------------------------|---------------|--|--|--|
| Panel | Size | 21.5 Inches (54 cm) | 23.6 Inches (59 cm) | 27 Inches (68 cm) |
| | Display area | 476.64 mm (H) x 268.11 mm (V) 18.77 Inches (H) x 10.56 Inches (V) | 521.28 mm (H) x 293.22 mm (V) 20.52 Inches (H) x 11.54 Inches (V) | 597.9 mm (H) x 336.3 mm (V) 23.54 Inches (H) x 13.24 Inches (V) |
| | Pixel Pitch | 0.24825 mm (H) x 0.24825 mm (V) 0.00977 Inches (H) x 0.00977 Inches (V) | 0.2715 mm (H) x 0.2715 mm (V) 0.0107 Inches (H) x 0.0107 Inches (V) | 0.3114 mm (H) x 0.3114 mm (V) 0.0123 Inches (H) x 0.0123 Inches (V) |
| Power Supply | | This product supports 100-240 V. Since the standard voltage may differ from country to country, please check the label on the back of the product. | | |
| Dimensions (W x H x D) / Weight | Without Stand | 514.2 x 323.3 x 81.7 mm 20.2 x 12.7 x 3.2 Inches | 547.8 x 332.5 x 80.1 mm 21.6 x 13.1 x 3.2 Inches | 625.2 x 376.3 x 79.6 mm 24.6 x 14.8 x 3.1 Inches |
| | With Stand | 514.2 x 401.4 x 184.9 mm / 3.2 kg (Square Stand Base) 20.2 x 15.8 x 7.3 Inches / 7.1 lbs (Square Stand Base) 514.2 x 389.4 x 209.0 mm / 3.2 kg (Round Stand Base) 20.2 x 15.3 x 8.2 Inches / 7.1 lbs (Round Stand Base) | 547.8 x 409.2 x 209.8 mm / 3.7 kg (Square Stand Base) 21.6 x 16.1 x 8.3 Inches / 8.2 lbs (Square Stand Base) 547.8 x 401.2 x 243.4 mm / 3.7 kg (Round Stand Base) 21.6 x 15.8 x 9.6 Inches / 8.2 lbs (Round Stand Base) | 625.2 x 453 x 209.8 mm / 4.7 kg (Square Stand Base) 24.6 x 17.8 x 8.3 Inches / 10.4 lbs (Square Stand Base) 625.2 x 445 x 243.4 mm / 4.7 kg (Round Stand Base) 24.6 x 17.5 x 9.6 Inches / 10.4 lbs (Round Stand Base) |
| Environmental Consideration | Operating | Temperature : 50°F ~ 104°F (10°C ~ 40°C) Humidity : 10 % – 80 %, non-condensing | | |
| | Storage | Temperature : -4°F ~ 113°F (-20°C ~ 45°C) Humidity : 5 % – 95 %, non-condensing | | |



Plug-and-Play

This monitor can be installed and used with any Plug-and-Play compatible systems. Two-way data exchange between the monitor and PC system optimizes the monitor settings. Monitor installation takes place automatically. However, you can customize the installation settings if desired.



Panel Dots (Pixels)

Due to the nature of the manufacturing of this product, approximately 1 pixel per million (1ppm) may be brighter or darker on the LCD panel. This does not affect product performance.



The above specifications are subject to change without notice to improve quality.



This device is a Class B digital apparatus.

(USA only)

Dispose unwanted electronics through an approved recycler.

To find the nearest recycling location, go to our website:

www.samsung.com/recyclingdirect or call, (877) 278 - 0799

10.2 PowerSaver

The power-saving function of this product reduces power consumption by switching off the screen and controlling the power LED status if the product is not used for a specified period of time. The power is not turned off in power-saving mode. To switch the screen back on, press any key on the keyboard or move the mouse. Power-saving mode functions only when the product is connected to a PC that has a power-saving function.

| PowerSaver | Energy Star Test Condition | Power saving mode | Power off (Power button) |
|---|----------------------------|-------------------|--------------------------|
| Power Indicator | On | Blinking | Off |
| Power Consumption (S22D390H / S22D393H) | Typical 21 W | Typical 0.3 W | Less than 0.3 W |
| Power Consumption (S24D390HL / S24D393HL) | Typical 21 W | Typical 0.3 W | Less than 0.3 W |
| Power Consumption (S27D390H / S27D393H) | Typical 22 W | Typical 0.3 W | Less than 0.3 W |



- The power consumption level can vary in different operating conditions or when settings are changed. (S**D390/S**D393 Model Power saving mode : Max 0.45 W)
- ENERGY STAR® is a US registered mark of the United States Environmental Protection Agency. Energy Star power is measured with the test method in the current Energy Star® Standard.
- To reduce the power consumption to 0 watts, turn off the power switch on the back of the product or disconnect the power cable. Be sure to disconnect the power cable when you will not be using the product for an extended period of time. To reduce the power consumption to 0 watts when the power switch is not available, disconnect the power cable.

10.3 Standard Signal Mode Table



- This product can be set to only one resolution for each screen size to obtain the optimum picture quality due to the nature of the panel. Therefore, a resolution other than the specified resolution may degrade the picture quality. To avoid this, it is recommended that you select the optimum resolution specified for the screen size of your product.
- Check the frequency when you exchange a CDT monitor (connected to a PC) for an LCD monitor. If the LCD monitor does not support 85Hz, change the vertical frequency to 60Hz using the CDT monitor before you exchange it with the LCD monitor.

| | | |
|-----------------|----------------------|---------------------|
| Synchronization | Horizontal Frequency | 30 ~ 81 kHz |
| | Vertical Frequency | 56 ~ 75 Hz |
| Resolution | Optimum Resolution | 1920 x 1080 @ 60 Hz |
| | Maximum Resolution | 1920 x 1080 @ 60 Hz |

If a signal that belongs to the following standard signal modes is transmitted from your PC, the screen will automatically be adjusted. If the signal transmitted from the PC does not belong to the standard signal modes, the screen may be blank even though the power LED turns on. In such a case, change the settings according to the following table by referring to the graphics card user manual.

| Resolution | Horizontal Frequency (kHz) | Vertical Frequency (Hz) | Pixel Clock (MHz) | Sync Polarity (H/V) |
|------------------|----------------------------|-------------------------|-------------------|---------------------|
| IBM, 720 x 400 | 31.469 | 70.087 | 28.322 | -/+ |
| MAC, 640 x 480 | 35.000 | 66.667 | 30.240 | -/- |
| MAC, 832 x 624 | 49.726 | 74.551 | 57.284 | -/- |
| MAC, 1152 x 870 | 68.681 | 75.062 | 100.000 | -/- |
| VESA, 640 x 480 | 31.469 | 59.940 | 25.175 | -/- |
| VESA, 640 x 480 | 37.861 | 72.809 | 31.500 | -/- |
| VESA, 640 x 480 | 37.500 | 75.000 | 31.500 | -/- |
| VESA, 800 x 600 | 35.156 | 56.250 | 36.000 | +/+ |
| VESA, 800 x 600 | 37.879 | 60.317 | 40.000 | +/+ |
| VESA, 800 x 600 | 48.077 | 72.188 | 50.000 | +/+ |
| VESA, 800 x 600 | 46.875 | 75.000 | 49.500 | +/+ |
| VESA, 1024 x 768 | 48.363 | 60.004 | 65.000 | -/- |
| VESA, 1024 x 768 | 56.476 | 70.069 | 75.000 | -/- |
| VESA, 1024 x 768 | 60.023 | 75.029 | 78.750 | +/+ |
| VESA, 1152 x 864 | 67.500 | 75.000 | 108.000 | +/+ |

| Resolution | Horizontal Frequency (kHz) | Vertical Frequency (Hz) | Pixel Clock (MHz) | Sync Polarity (H/V) |
|--------------------|----------------------------|-------------------------|-------------------|---------------------|
| VESA, 1280 x 720 | 45.000 | 60.000 | 74.250 | +/+ |
| VESA, 1280 x 800 | 49.702 | 59.810 | 83.500 | -/+ |
| VESA, 1280 x 1024 | 63.981 | 60.020 | 108.000 | +/+ |
| VESA, 1280 x 1024 | 79.976 | 75.025 | 135.000 | +/+ |
| VESA, 1440 x 900 | 55.935 | 59.887 | 106.500 | -/+ |
| VESA, 1600 x 900RB | 60.000 | 60.000 | 108.000 | +/+ |
| VESA, 1680 x 1050 | 65.290 | 59.954 | 146.250 | -/+ |
| VESA, 1920 x 1080 | 67.500 | 60.000 | 148.500 | +/+ |



- Horizontal Frequency

The time required to scan a single line from the left to the right side of the screen is called a horizontal cycle. The reciprocal number of a horizontal cycle is called horizontal frequency. Horizontal frequency is measured in kHz.

- Vertical Frequency

Repeating the same picture dozens of times per second allows you to view natural pictures. The repeat frequency is called "vertical frequency" or "refresh rate" and is indicated in Hz.

Contact SAMSUNG WORLD WIDE



If you have any questions or comments relating to Samsung products, please contact the SAMSUNG customer care center.

| NORTH AMERICA | | |
|---------------|---|--|
| U.S.A | 1-800-SAMSUNG (726-7864) | http://www.samsung.com/us |
| CANADA | 1-800-SAMSUNG (726-7864) | http://www.samsung.com/ca (English) http://www.samsung.com/ca_fr (French) |
| LATIN AMERICA | | |
| ARGENTINE | 0800 333 3733 | http://www.samsung.com.ar |
| BOLIVIA | 800-10-7260 | http://www.samsung.com |
| BRAZIL | 0800-124-421 (Demais cidades e regiões) 4004-0000 (Capitais e grandes centros) | http://www.samsung.com.br |
| CHILE | 800-SAMSUNG (726-7864) | http://www.samsung.com/cl |
| COLOMBIA | 01 8000 112 112 Bogotá 600 12 72 | http://www.samsung.com/co |
| COSTA RICA | 0-800-507-7267 | http://www.samsung.com/latin (Spanish) http://www.samsung.com/latin_en (English) |
| DOMINICA | 1-800-751-2676 | http://www.samsung.com/latin (Spanish) http://www.samsung.com/latin_en (English) |
| ECUADOR | 1-800-10-7267 | http://www.samsung.com/latin (Spanish) http://www.samsung.com/latin_en (English) |
| EL SALVADOR | 800-6225 | http://www.samsung.com/latin (Spanish) http://www.samsung.com/latin_en (English) |

Appendix

| LATIN AMERICA | | |
|-------------------|---------------------------|--|
| GUATEMALA | 1-800-299-0013 | http://www.samsung.com/latin (Spanish) http://www.samsung.com/latin_en (English) |
| HONDURAS | 800-27919267 | http://www.samsung.com/latin (Spanish) http://www.samsung.com/latin_en (English) |
| JAMAICA | 1-800-234-7267 | http://www.samsung.com |
| NICARAGUA | 001-800-5077267 | http://www.samsung.com/latin (Spanish) http://www.samsung.com/latin_en (English) |
| MEXICO | 01-800-SAMSUNG (726-7864) | http://www.samsung.com |
| PANAMA | 800-7267 | http://www.samsung.com/latin (Spanish) http://www.samsung.com/latin_en (English) |
| PARAGUAY | 009 800 542 0001 | http://www.samsung.com.py |
| PERU | 0-800-777-08 | http://www.samsung.com/pe |
| PUERTO RICO | 1-800-682-3180 | http://www.samsung.com |
| TRINIDAD & TOBAGO | 1-800-SAMSUNG (726-7864) | http://www.samsung.com |
| URUGUAY | 000 405 437 33 | http://www.samsung.com |
| VENEZUELA | 0-800-100-5303 | http://www.samsung.com/ve |

| EUROPE | | |
|----------|---|---|
| AUSTRIA | 0810 - SAMSUNG (7267864, € 0.07/min) | http://www.samsung.com |
| BELGIUM | 02-201-24-18 | http://www.samsung.com/be (Dutch) http://www.samsung.com/be_fr (French) |
| BOSNIA | 051 331 999 | http://www.samsung.com |
| BULGARIA | 07001 33 11, share cost tariff | http://www.samsung.com/bg |
| CROATIA | 062 SAMSUNG (062 726 786) | http://www.samsung.com/hr |
| CYPRUS | 8009 4000 only from landline | http://www.samsung.com/gr |

Appendix

| EUROPE | | |
|-------------|--|---|
| CZECH | 800 - SAMSUNG (800-726786) | http://www.samsung.com |
| | Samsung Electronics Czech and Slovak, s.r.o. V Parku 2343/24, 148 00 - Praha 4 | |
| DENMARK | 70 70 19 70 | http://www.samsung.com |
| EIRE | 0818 717100 | http://www.samsung.com |
| ESTONIA | 800-7267 | http://www.samsung.com/ee |
| FINLAND | 030-6227 515 | http://www.samsung.com |
| FRANCE | 01 48 63 00 00 | http://www.samsung.com/fr |
| GERMANY | 0180 6 SAMSUNG bzw. | http://www.samsung.com |
| | 0180 6 7267864* (*0,20 €/Anruf aus dem dt. Festnetz, aus dem Mobilfunk max. 0,60 €/Anruf) | |
| GREECE | 80111-SAMSUNG (80111 726 7864) only from land line (+30) 210 6897691 from mobile and land line | http://www.samsung.com/gr |
| HUNGARY | 06-80-SAMSUNG (726-7864) | http://www.samsung.com/hu |
| ITALIA | 800-SAMSUNG (726-7864) | http://www.samsung.com |
| LATVIA | 8000-7267 | http://www.samsung.com/lv |
| LITHUANIA | 8-800-77777 | http://www.samsung.com/lt |
| LUXEMBURG | 261 03 710 | http://www.samsung.com |
| MONTENEGRO | 020 405 888 | http://www.samsung.com |
| NETHERLANDS | 0900 - SAMSUNG (0900-7267864) (€ 0,10/Min) | http://www.samsung.com |
| NORWAY | 815 56480 | http://www.samsung.com |
| POLAND | 0 801-172-678* lub +48 22 607-93-33 ** *(całkowity koszt połączenia jak za 1 impuls według taryfy operatora) ** (koszt połączenia według taryfy operatora) | http://www.samsung.com/pl |
| PORTUGAL | 808 20 - SAMSUNG (808 20 7267) | http://www.samsung.com |
| ROMANIA | 08008 SAMSUNG (08008 726 7864) TOLL FREE No. | http://www.samsung.com/ro |
| SERBIA | 011 321 6899 | http://www.samsung.com/rs |

Appendix

| EUROPE | | |
|-------------|---|--|
| SLOVAKIA | 0800 - SAMSUNG (0800-726 786) | http://www.samsung.com |
| SPAIN | 902172678 | http://www.samsung.com |
| SWEDEN | 0771 726 7864 (SAMSUNG) | http://www.samsung.com |
| SWITZERLAND | 0848-SAMSUNG (7267864, CHF 0.08/min) | http://www.samsung.com/ch (German) http://www.samsung.com/ch_fr (French) |
| U.K | 0330 SAMSUNG (7267864) | http://www.samsung.com |

| CIS | | |
|-------------|------------------------------------|--|
| ARMENIA | 0-800-05-555 | http://www.samsung.com |
| AZERBAIJAN | 088-55-55-555 | http://www.samsung.com |
| BELARUS | 810-800-500-55-500 | http://www.samsung.com |
| GEORGIA | 0-800-555-555 | http://www.samsung.com |
| KAZAKHSTAN | 8-10-800-500-55-500 (GSM: 7799) | http://www.samsung.com |
| KYRGYZSTAN | 00-800-500-55-500 | http://www.samsung.com |
| MOLDOVA | 0-800-614-40 | http://www.samsung.com |
| MONGOLIA | +7-800-555-55-55 | http://www.samsung.com |
| RUSSIA | 8-800-555-55-55 | http://www.samsung.com |
| TADJIKISTAN | 8-10-800-500-55-500 | http://www.samsung.com |
| UKRAINE | 0-800-502-000 | http://www.samsung.com/ua (Ukrainian) http://www.samsung.com/ua_ru (Russian) |
| UZBEKISTAN | 8-10-800-500-55-500 | http://www.samsung.com |

| ASIA PACIFIC | | |
|--------------|-----------------|--|
| AUSTRALIA | 1300 362 603 | http://www.samsung.com/au |
| CHINA | 400-810-5858 | http://www.samsung.com |
| HONG KONG | (852) 3698 4698 | http://www.samsung.com/hk (Chinese) http://www.samsung.com/hk_en (English) |

Appendix

| ASIA PACIFIC | | |
|--------------|--|---|
| INDIA | 1800 3000 8282 1800 266 8282 | http://www.samsung.com/in |
| INDONESIA | 0800-112-8888 (Toll Free) (021) 56997777 | http://www.samsung.com/id |
| JAPAN | 0120-327-527 | http://www.samsung.com |
| MALAYSIA | 1800-88-9999 | http://www.samsung.com/my |
| NEW ZEALAND | 0800 SAMSUNG (0800 726 786) | http://www.samsung.com/nz |
| PHILIPPINES | 1-800-10-7267864 [PLDT] 1-800-8-7267864 [Globe landline and Mobile] 02-4222111 [Other landline] | http://www.samsung.com/ph |
| SINGAPORE | 1800-SAMSUNG (726-7864) | http://www.samsung.com/sg |
| TAIWAN | 0800-32-9999 | http://www.samsung.com/tw |
| THAILAND | 0-2689-3232, 1800-29-3232 | http://www.samsung.com/th |
| VIETNAM | 1800 588 889 | http://www.samsung.com |

| MENA | | |
|---------|--------------------------|---|
| ALGERIA | 0800 100 100 | http://www.samsung.com/n_africa |
| BAHRAIN | 8000-4726 | http://www.samsung.com/ae (English) http://www.samsung.com/ae_ar (Arabic) |
| EGYPT | 08000-726786 | http://www.samsung.com |
| IRAN | 021-8255 | http://www.samsung.com |
| JORDAN | 0800-22273 06 5777444 | http://www.samsung.com/Levant (English) |
| KUWAIT | 183-2255 (183-CALL) | http://www.samsung.com/ae (English) http://www.samsung.com/ae_ar (Arabic) |
| MOROCCO | 080 100 2255 | http://www.samsung.com |
| OMAN | 800-SAMSUNG (726-7864) | http://www.samsung.com/ae (English) http://www.samsung.com/ae_ar (Arabic) |

Appendix

| MENA | | |
|--------------|------------------------|---|
| PAKISTAN | 0800-Samsung (72678) | http://www.samsung.com/pk/ |
| QATAR | 800-2255 (800-CALL) | http://www.samsung.com/ae (English) http://www.samsung.com/ae_ar (Arabic) |
| SAUDI ARABIA | 920021230 | http://www.samsung.com/sa |
| SYRIA | 18252273 | http://www.samsung.com/Levant (English) |
| TUNISIA | 80-1000-12 | http://www.samsung.com/n_africa |
| TURKEY | 444 77 11 | http://www.samsung.com |
| U.A.E | 800-SAMSUNG (726-7864) | http://www.samsung.com |

| AFRICA | | |
|---------------|---------------------------|---|
| BOTSWANA | 8007260000 | http://www.samsung.com |
| BURUNDI | 200 | http://www.samsung.com |
| CAMEROON | 7095-0077 | http://www.samsung.com/africa_fr |
| COTE D'IVOIRE | 8000 0077 | http://www.samsung.com/africa_fr |
| DRC | 499999 | http://www.samsung.com |
| GHANA | 0800-10077 0302-200077 | http://www.samsung.com/africa_en |
| KENYA | 0800 545 545 | http://www.samsung.com |
| NAMIBIA | 08 197 267 864 | http://www.samsung.com |
| NIGERIA | 0800-726-7864 | http://www.samsung.com/africa_en |
| MOZAMBIQUE | 847267864 / 827267864 | http://www.samsung.com |
| RWANDA | 9999 | http://www.samsung.com |
| SENEGAL | 800-00-0077 | http://www.samsung.com/africa_fr |
| SOUTH AFRICA | 0860 SAMSUNG (726 7864) | http://www.samsung.com |
| SUDAN | 1969 | http://www.samsung.com |
| TANZANIA | 0685 88 99 00 | http://www.samsung.com |
| UGANDA | 0800 300 300 | http://www.samsung.com |
| ZAMBIA | 0211 350370 | http://www.samsung.com |

Responsibility for the Pay Service (Cost to Customers)



When the service is requested, in spite of in warranty, we may charge you for a visit from a service technician in the following cases.

Not a product defect

Cleaning of the product, Adjustment, Explanation, Re-installation and etc.

- If a service technician gives instructions on how to use product or simply adjusts options without disassembling product.
- If a defect is caused by external environmental factors. (Internet, Antenna, Wired Signal, etc.)
- If a product is reinstalled or devices are connected additionally after installing the purchased product for the first time.
- If a product is reinstalled to move to a different spot or to move to a different house.
- If customer requests instructions on how to use because of another company's product.
- If customer requests instructions on how to use the network or another company's program.
- If customer requests software installation and setup for the product.
- If a service technician removes/cleans dusts or foreign materials inside of the product.
- If customer requests an installation additionally after purchasing a product through home-shopping or online.

A Product damage caused by customer's fault

Product damage caused by customer's mishandling or wrong repair

If a product damage is caused by;

- external impact or drop.
- use of supplies or separately sold product unspecified by Samsung.
- repair from a person besides an engineer of outsourcing service company or partner of Samsung Electronics Co., Ltd.
- remodeling or repairing the product by customer.
- using it with incorrect voltage or non-authorized electrical connections.
- not following the "cautions" in User Manual.

Others

- If product fails by natural disaster. (lightning, fire, earthquake, flood damage, etc)
- If consumable components are all used up. (Battery, Toner, Fluorescent lights, Head, Vibrator, Lamp, Filter, Ribbon, etc.)

Appendix



If customer requests a service in case the product has no defect, service fee may be charged. So please read User Manual first.

Correct Disposal

Correct Disposal of This Product (Waste Electrical & Electronic Equipment)



(Applicable in countries with separate collection systems)

This marking on the product, accessories or literature indicates that the product and its electronic accessories (e.g. charger, headset, USB cable) should not be disposed of with other household waste at the end of their working life. To prevent possible harm to the environment or human health from uncontrolled waste disposal, please separate these items from other types of waste and recycle them responsibly to promote the sustainable reuse of material resources.

Household users should contact either the retailer where they purchased this product, or their local government office, for details of where and how they can take these items for environmentally safe recycling.

Business users should contact their supplier and check the terms and conditions of the purchase contract. This product and its electronic accessories should not be mixed with other commercial wastes for disposal.

Terminology

OSD (On Screen Display)

On screen display (OSD) allows you to customize on-screen settings to optimize the picture quality as required. You can change the screen brightness, tint, size and many other settings using menus displayed on the screen.

Gamma

The Gamma menu adjusts the grey scale that represents middle tones on the screen. Adjusting the brightness brightens the whole screen, but adjusting Gamma only brightens the medium brightness.

Grey scale

Scale refers to levels of color intensity that show variations of color change from darker areas to brighter areas on the screen. Changes to the screen brightness are expressed with black and white variation, and grey scale refers to the medium area between black and white. Changing the grey scale through Gamma adjustment will change the medium brightness on the screen.

Scanning rate

Scanning rate, or refresh rate, refers to the frequency of screen refreshes. Screen data is transmitted as it refreshes to display an image, although the refreshing is invisible to the naked eye. The number of screen refreshes is called scanning rate and is measured in Hz. A scanning rate of 60Hz means that the screen refreshes 60 times per second. The screen scanning rate depends on the performance of the graphics cards in your PC and monitor.

Horizontal Frequency

Characters or images displayed on the monitor screen consist of numerous dots (pixels). Pixels are transmitted in horizontal lines, which are then arranged vertically to create an image. The horizontal frequency is measured in kHz and represents how many times horizontal lines per second are transmitted and displayed on the monitor screen. A horizontal frequency of 85 means that the horizontal lines that make up an image are transmitted 85000 times per second. The horizontal frequency is indicated in 85kHz.

Vertical Frequency

One image is made of numerous horizontal lines. The vertical frequency is measured in Hz and represents how many images can be created per second by those horizontal lines. A vertical frequency of 60 means that an image is transmitted 60 times per second. The vertical frequency is also called "refresh rate" and affects screen flicker.

Resolution

Resolution is the number of horizontal pixels and vertical pixels that form a screen. It represents the level of display detail.

A higher resolution displays a greater amount of information on the screen and is suitable for performing multiple tasks at the same time.

E.g. A resolution of 1920 x 1080 consists of 1920 horizontal pixels (horizontal resolution) and 1080 vertical lines (vertical resolution).

Plug & Play

The Plug & Play feature allows the automatic exchange of information between a monitor and PC to produce an optimum display environment.

The monitor uses VESA DDC (international standard) to execute Plug & Play.

Index

B

- Before Connecting 28
- Blue 53
- Brightness 34

C

- Checking the Contents 19
- Cleaning 8
- Coarse 49
- Color Tone 54
- Connecting and Using a PC 28
- Contact SAMSUNG WORLD WIDE 82
- Contrast 35
- Copyright 7
- Correct Disposal 90
- Correct posture to use the product 18

D

- Display Time 58

E

- Easy Setting Box 70
- Eco Saving 61

F

- Fine 50

G

- Game Mode 37
- Gamma 55
- General 77
- Green 52

H

- HDMI Black Level 45

I

- Image Size 43
- INFORMATION 67
- Installation 24

K

- Key Repeat Time 65

L

- Language 56

O

- Off Timer 62

P

- Parts 20
- PC/AV Mode 64
- PowerSaver 79

Q

- Q & A 75

R

- Red 51
- Requirements Before Contacting Samsung Customer Service Center 72
- Reset All 60
- Response Time 46
- Responsibility for the Pay Service (Cost to Customers) 88

Index

S

- Safety Precautions 10
- SAMSUNG MAGIC Angle 40
- SAMSUNG MAGIC Bright 38
- SAMSUNG MAGIC Upscale 42
- Sharpness 36
- Source Detection 66
- Standard Signal Mode Table 80

T

- Terminology 91
- Transparency 59