

ACCO BRANDS
NOW SHOWING
WHAT'S NEW 2013

 **Rexel**

 **nobo**

Kensington

 **GBC**





HANDS FREE

AUTOMATIC SHREDDING



STACK

SHUT

DONE



Simply faster to the finish...

Introducing the new line of Fusion™ Laminators

With amazingly fast warm up times and throughput speeds, you'll be done before you even know you started. Plus ...the new easy-to-use design makes finishing any project simpler than ever.

Use the Easy to Shop™ guide below to choose the right Fusion™ Laminator for you.





SAVE UP TO 98% OF YOUR TIME SHREDDING

Load the paper and close the lid. Auto Feed shredders automatically start shredding - no need to stand at the shredder hand feeding sheet by sheet!

A range of 5 machines to meet all shredding needs, able to shred from 60 to 500 sheets (80gsm) in one load.

Independent tests have confirmed these great, time saving results!

TIME SPENT AT THE SHREDDER (MINS)

	Traditional Feed Shredder	REXEL Auto Feed shredder	Time Saving
500 Sheets	14:15	00:14	98%

Max saving when using an Auto+ 500X compared to a traditional feed shredder in a similar price level. Independent test from Intertek Testing & Certification Ltd June 2012.



Hands Free Shredder 175X



- Shreds up to 175 sheets in one fill (80gsm) • 4x40mm confetti cut pieces (security level 4) • 32 litre bin with viewing window can hold up to 325 sheets and internal paper/plastic bag frame • Manual feed slot for up to 6 sheets (80gsm) • Shreds CDs



Hands Free Shredder 750X



- Shreds up to 750 sheets in one fill (80gsm) • 4x40mm confetti cut pieces (security level 4) • Easy to empty 115 litre pull out frame with viewing window can hold up to 1,200 sheets • Manual feed slot for up to 12 sheets (80gsm) • Includes jam free technology when manual feeding • Door open/bin full • 4 digit pin code lock for secure, walk away shredding • Shreds CDs.

For more information on other products in this range please see below or visit www.rexeurope.com/shredders

HANDS-FREE CROSS CUT SHREDDERS

FEATURE COMPARISON	LIGHT USE		EVERYDAY USE			HEAVY USE	
	AUTO+ 60X	AUTO+ 80X	AUTO+ 100X	AUTO+ 175X	AUTO+ 250X	AUTO+ 500X	AUTO+ 750X
Model	AUTO+ 60X	AUTO+ 80X	AUTO+ 100X	AUTO+ 175X	AUTO+ 250X	AUTO+ 500X	AUTO+ 750X
Users	1		1-2	1-5	5-10	10-20	20+
Use	Under Desk		Executive	Small Office	Small Office	Department	Large Office
Cut Type	Confetti	Confetti	Confetti	Confetti	Confetti	Confetti	Confetti

HANDS-FREE SHREDDING

Sheet Capacity	60	80	100	175	250	500	750
Staples and Paper Clips	✓	✓	✓	✓	✓	✓	✓
Intelligent Jam Clearance		✓	✓	✓	✓	✓	✓
Lockable Chamber				Optional	✓	✓	✓



Simply faster to the finish...

Introducing the new line of Fusion™ Laminators

With amazingly fast warm up times and throughput speeds, you'll be done before you even know you started. Plus ...the new easy-to-use design makes finishing any project simpler than ever. Use the Easy to Shop™ guide below to choose the right Fusion™ Laminator for you.

FUSION™ SERIES LAMINATORS									
Feature Comparison	Low Volume Lamination				Medium Volume Lamination			High Volume Lamination	
Model	1000L	1000L	1100L	1100L	3000L	3000L	3100L	5000L	5100L
Max Document Size	A4	A3	A4	A3	A4	A3	A3	A3	A3
Use	Personal				Personal & Shared			Shared	
PRODUCTIVITY / SPEED									
Warm Up time	5 min	5 min	4 min	4 min	1.5 min	1.5 min	1min	1min	1min
Pouches / 10 min *	10	10	10	10	16	16	26	33	40
Max Pouch Thickness (mic)	75 mic	75 mic	125 mic	125 mic	125 mic	125 mic	175 mic	250 mic	250 mic
Easy Set Up	✓	✓	✓	✓	✓	✓	✓	✓	✓
Visual Ready Alert	✓	✓	✓	✓	✓	✓	✓	✓	✓
Audible Ready Alert			✓	✓	✓	✓	✓	✓	✓
Manual Release/Reverse			✓	✓	✓	✓	✓	✓	✓
Intelligent™ Power Off			✓	✓	✓	✓	✓	✓	✓
Touch Control					✓	✓	✓	✓	✓
Accurate Feed Guide					✓	✓	✓	✓	✓
Intelligent™ Status Alert					✓	✓	✓	✓	✓
Intelligent™ Pouch Reverse								✓	✓
Interactive User Display								✓	✓
Intelligent™ Pouch Select								✓	✓
Intuitive Menu Selection									✓
Professional Controls									✓

* After warm-up is complete; A4 size pouches.

Laminating: Large Office Machines



Fusion™ 5100L A3

Complete high volume lamination exceptionally fast. Auto pouch thickness detector and auto misfed recovery make laminating easy. Maximum versatility handles all your jobs.

- **Warms up in 1 minute and laminates an A4 document with a 75 micron pouch in just 15 seconds for exceptionally fast results**
- **Laminator detects pouch thickness and determines optimal settings**
- Premium LCD screen displays Manual Settings, Help Menu, Job Counter, and a "Countdown to Ready" Timer

Model	Lamination Width	Product Code
Fusion 5100L A3	A3 Max (324mm)	4400752EU

Warm up time
(75mic)

Speed

Pouch Thickness

All times shown are approximate



Full Logic Premium LCD screen

A3

Lightening fast and all the control you'll ever need



Fusion™ 5000L A3

Make daily laminating easy. Laminator recognizes pouch thickness and adjusts settings accordingly.

- **Warms up in 1 minute and laminates an A4 document with a 75 micron pouch in just 18 seconds for super fast laminating**
- **Laminator detects pouch thickness and determines optimal settings**
- Digital control screen - for manual settings, use simple on-screen selections

Model	Lamination Width	Product Code
Fusion 5000L A3	A3 Max (324mm)	4400751EU

Warm up time (75mic)
 Speed
 Pouch Thickness

All times shown are approximate



Laminating: Mid to Large Office Machines

Fusion™ 3100L A3

User friendly laminator increases productivity and keeps important documents free from wear and tear.

- **Fast and productive 1 minute warm-up**
- Laminates an A4 document with a 2 x 75 micron pouch in just over 20 seconds; laminates ID to A3 size documents
- Use with 2 x 75 to 2 x 175 micron thermal pouches
- **Switch instantly between pouch thickness with the touch of a button**

Model	Lamination Width	Product Code
Fusion 3100L A3	A3 Max (324mm)	4400750EU

Warm up time (75mic)
 Speed
 Pouch Thickness

All times shown are approximate



Fusion™ 3000L A3 & A4

Ideal for offices and users who laminate on a regular basis.

- **Quick and convenient laminator warms up in 90 seconds**
- Laminates an A4 document with a 2 x 75 micron pouch in just over 30 seconds
- Use with 2 x 75, 2 x 125 & 2 x 125 micron thermal pouches
- Select micron thickness with the touch of a button
- **Adjustable Pouch guide keep documents perfectly aligned**

Model	Lamination Width	Product Code
Fusion 3000L A3	A3 Max (324mm)	4400749EU
Fusion 3000L A4	A4 Max (241mm)	4400749EU

Warm up time (75mic)
 Speed
 Pouch Thickness

All times shown are approximate





Laminating: Mid to Large Office Machines

Fusion™ 1100L A3 & A4

Easy-to-use laminator protects and preserves documents and photos.

- Warms up in 4 minutes and laminates an A4 document with a 2 x 75 micron pouch in less than a minute
- Use with 2 x 75 and 2 x 125 micron thermal pouches
- **Select pouch thickness with slider switch**

Model	Lamination Width	Product Code
Fusion 1100L A3	A3 Max (324mm)	4400747EU
Fusion 1100L A4	A4 Max (241mm)	4400746EU

4 min Warm up time (75mic)	10 /10min Speed	75 > 125 mic (x2) Pouch Thickness
---	---------------------------	--

*Whisper Lam:
Smooth lamination
and ultra quiet*



Fusion™ 1000L A3 & A4

The simple pouch laminator that's ideal for crafts projects, home and occasional use in the small office.

- **Easy one step lamination – just turn it on**
- Warms up in 5 minutes and laminates an A4 document in less than a minute
- Use 2 x 75 micron thermal pouches

Model	Lamination Width	Product Code
Fusion 1000L A3	A3 Max (324mm)	4400745EU
Fusion 1000L A4	A4 Max (241mm)	4400744EU

5 min Warm up time (75mic)	10 /10min Speed	75 mic (x2) Pouch Thickness
---	---------------------------	---------------------------------------

All times shown are approximate



Laminating: Consumables

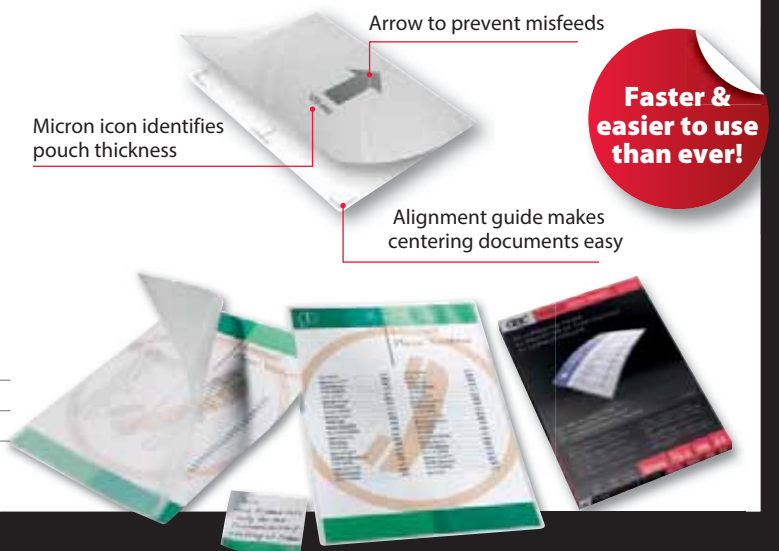
HighSpeed™ Pouch

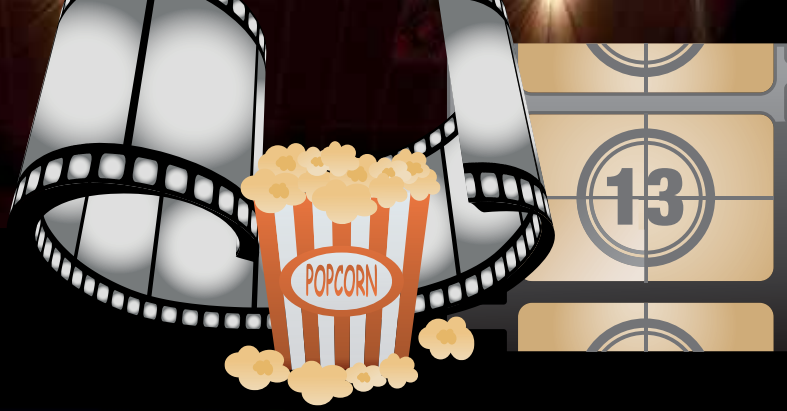
Lamination is easy with HighSpeed™ Laminating Pouches.

- Alignment guides take the frustration out of centering documents
- Micron icons identify pouch thickness for proper laminator settings
- Arrows show which direction to load pouch into laminator to prevent misfeeds

All HighSpeed™ Pouches feed on the long edge saving time and money!
Available in A4 size for use with A3 Laminators only.

Description		Prod. Code	Qty.
A4 landscape (216x303 mm)	2x75 mic.	3747347	100
	2x125 mic.	3747348	100





Leaders in Low Force Technology Rexel's low force range

MAXIMISE TIME, MINIMISE EFFORT...

Frustrated by the effort it takes to staple documents everyday? Rexel's leading range of low force staplers is the answer.

Incorporating patented technology, the Easy Touch range of staplers from Rexel guarantee up to 50% less effort when stapling.

- Flat clinch staple finish means your documents take up 30% less space on your desk or in your files
- Perfect for everyday use ranging from 20-30 sheet capacities
- Low staple indicators show you when to refill so you never run out of staples
- Durable metal construction with rubberised grips for comfortable action
- All models include a starter pack of staples



Product Description	Easy Touch Quarter Strip	Easy Touch Half Strip	Easy Touch Full Strip
Sheet Capacity	20	30	30
Stapler Size	Mini	Compact	Full
Staple Load Capacity	50	105	210
Staple Type	No56 (26/6) & No16 (24/6)	No56 (26/6) & No16 (24/6)	No56 (26/6) & No16 (24/6)
Starter Pack of Staples	Included	Included	Included
Low Force	-50% less stapling effort	-50% less stapling effort	-50% less stapling effort
Flat Clinch		•	•
Durability	★★★★	★★★★	★★★★
Low Staple Indicator	•	•	•
Comfort Grip	•	•	•
Warranty	5 years	5 years	5 years
Item Codes & Colour	2102561 - Black	2102548 - Black	2102550 - Black
	2102562 - White	2102549 - White	2102551 - White
	2102632 - Pink	2102636 - Pink	
	2102633 - Blue	2102637 - Blue	
	2102635 - Green	2102639 - Green	
	2102634 - Orange	2102638 - Orange	

Product Description	Easy Touch Punch
Sheet Capacity	30
Low Force	-50% less punching effort
Durability	★★★★
Comfort Grip	•
Easy Empty Confetti Tray	•
Adjustable Papersize Guide	•
Warranty	5 years
Item Codes & Colour	2102575 - Black
	2102576 - White
	2102640 - Pink
	2102641 - Blue
	2102643 - Green
	2102642 - Orange

Rexel's low force staplers provide up to
50% LESS EFFORT*

*Verses a standard desktop stapler

Introducing...

The new crocodile leather-effect filing range, products that are highly functional as well as fashionable, perfect for home office workers and mobile executives who want to make an impact.

Combining fashion with functionality the new range of filing products from Rexel look good enough to wear!



Croc A5 & A4 Notebooks

- Fashionable crocodile patterned covers made from sturdy board laminated for protection against wear and tear
- Each book has 160 sheets 80gsm feint ruled paper
- Twin wire black spiral spine allows the books to be opened flat or folded back 360° degrees.
- Rigid cover makes it easy to write while mobile
- Available in A5 and A4 Red & Black



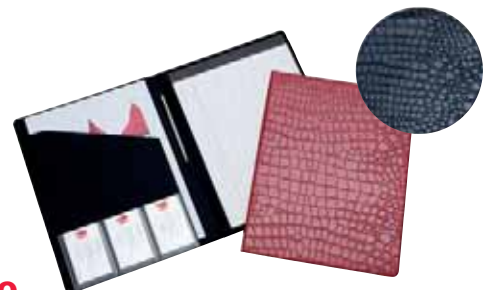
Croc A4 40 Pocket Display Book

- Fashionable crocodile leather-effect material, ideal for use at home, in the office or on the move.
- 40 glass clear, copy secure pockets
- Internal pocket for loose papers
- Business card pocket
- Available in A4 Red & A4 Black



Croc Business Card Book

- 2 ring binder mechanism with clear alphabetic index system
- Contains space for 128 business cards
- Business card holder on the inside cover
- Extra business card pockets also available code 2101131
- Available in both Red & Black



Croc A4 Folio

- Fashionable crocodile leather-effect folio with notepad, ideal for use at home, in the office or on the move
- Contains A4 lined note pad, pockets for loose papers, business cards and pen holder it looks great, whilst coping with your storage needs
- Available in both Red & Black

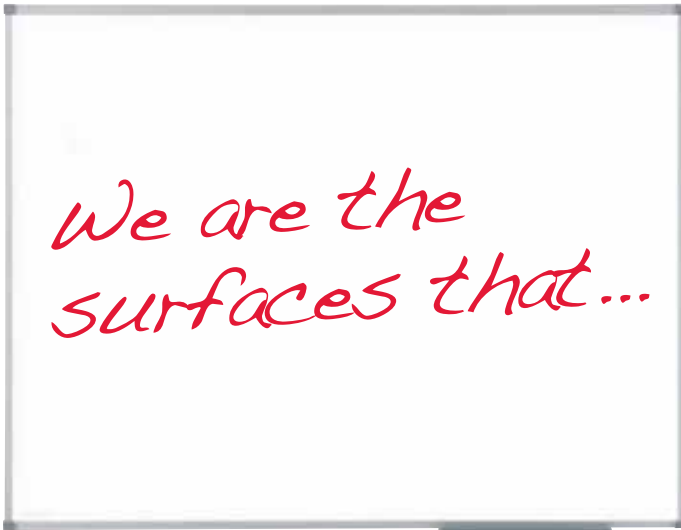
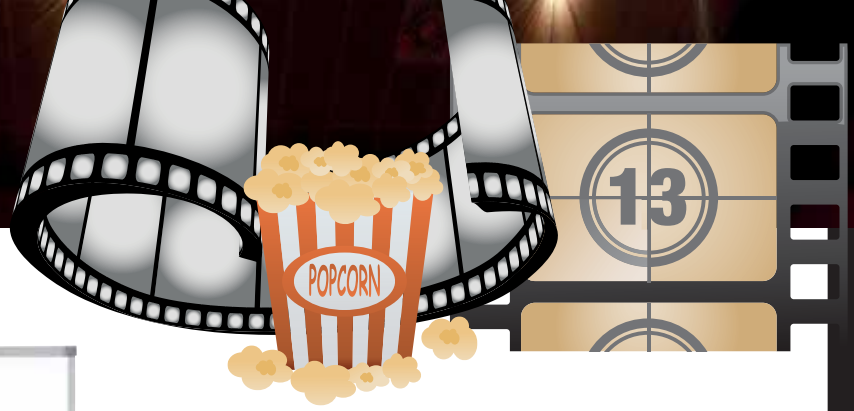
New Croc Filing Range	Code
Display Book - Red	2103669
Display Book - Black	2103668
A5 Notebook - Red	2103675
A5 Notebook - Black	2103674
A4 Notebook - Red	2103677
A4 Notebook - Black	2103676
Business Card Book - Black	2103671
Business Card Book - Red	2103670
Folio - Black	2103672
Folio - Red	2103673

360° Display Books

- Presentation, organisation and protection of documents for use in the office, school or at home
- Long lasting, hard wearing polypropylene cover
- Twin wire black spiral spine allows the books to be opened flat or folded back 360° degrees
- Includes 30 clear, durable pockets to protect documents
- Range includes 2 x Display Books



360° Display Books	Code
Display Book - Black	2103660
Display Book - Silver	2103661



... ease your social conscience

Nobo Eco-Classic Magnetic Whiteboards

Nobo EcoClassic is a range of sustainable eco-friendly whiteboards, with both product and packaging made from post consumer/industrial waste.

- Magnetic enamel surface, C2C certified, 15 year warranty
- Board core manufactured using recycled honeycomb material
- Each board in the EcoClassic range, has a total recycled content of over 40%
- All product packaging is 100% recycled and 100% recyclable
- Includes clip on pen tray and black corner caps – all 100% recycled
- Fixing kit included

Size	Enamel
600 x 450mm	1903755
900 x 600mm	1902756
900 x 1200mm	1903757
1500 x 1000mm	1903758
1800 x 1200mm	1903759



*C2C certification applies to enamel surface only

Quartet® Helps You Stay Connected

As the world's largest provider of whiteboards and noticeboards, Quartet offers a complete line of innovative and stylish, home & back-to-school products to help students & families stay better connected. Our colorful personal-sized, dry-erase boards look great in any study area or kitchen. For larger home offices or study areas, our fashionable boards deliver more writing and display space and looks great in any room décor.

For more information, please contact your local sales representative.



New Wireless Presenters Range from Kensington



Presenter Expert

The simple four-button design makes it easy to navigate the presentations. Additionally now with a simple flick of a switch, you'll toggle between presentation and cursor control modes.

K72427EU	Presenter Expert	Green laser, cursor control and memory
K72426EU	Presenter Expert	Green laser with cursor control
K72425EU	Presenter Expert	Red laser with cursor control

Pro Fit® Mid-Size Wireless Mouse

We've designed a mouse that not only fits your hand, but also your style sensibilities.

K72422WW	Pro Fit® Mid-Size Wireless Mouse	Sapphire Blue
K72422WW	Pro Fit® Mid-Size Wireless Mouse	Ruby Red
K72423WW	Pro Fit® Mid-Size Wireless Mouse	Graphite Gray
K72424WW	Pro Fit® Mid-Size Wireless Mouse	Emerald Green



SureTrack™ Mouse

The high-definition optical sensor allows it to track anywhere you work even on glass. What's more, the SureTrack Mouse connects to your Ultrabook®, MacBook Air® or laptop without monopolizing a valuable USB port because it connects via Bluetooth® (Product code: K72437EU)

Apple Security Solutions

Bolt the SafeStand directly to a desk or table, then secure it to the iMac with the ingenious Kensington SafeDome. Or attach your iMac to any fixed surface with with SafeDome and ClickSafe lock.

K64960WW	SafeStand 21" iMac® Keyed Locking Station
K64961WW	SafeStand 27" iMac® Keyed Locking Station
K64962EU	SafeDome™ Secure ClickSafe® Keyed Lock for iMac®



SafeDock™ offers security in one sleek and stylish solution. Simply slide your MacBook Air into the SafeDock and attach the ClickSafe® Lock to secure your MacBook Air.

K67758EU	SafeDock™ for MacBook® Air 11" Security Dock & Keyed Lock
K67759EU	SafeDock™ for MacBook® Air 13" Security Dock & Keyed Lock

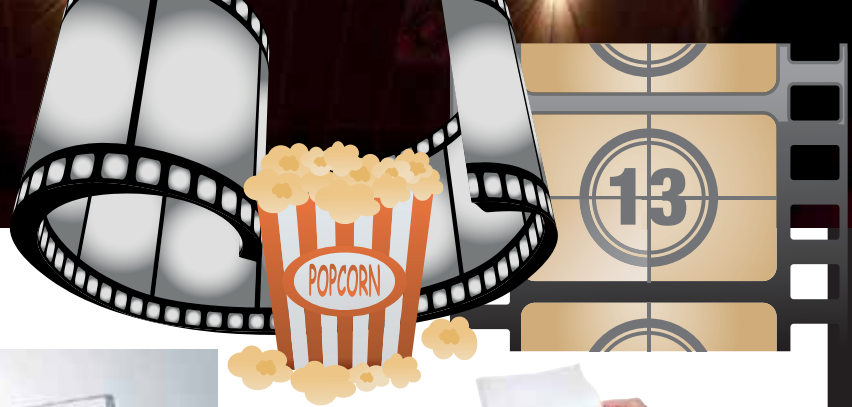
Folio SecureBack™ Folio Case & Lock for new iPad® & iPad 2

With the Folio SecureBack™ you'll have a stylish folio case to carry and protect your iPad while on the go (Product code: K67753EU)



Charge & Sync Cabinet for iPad®

With space for 10 iPad and the ability to stack up to 3 cabinets, the Charge and Sync Cabinet is the smart solution to iPad security. (Product code: K67771EU)



The Kensington KeyFolio™ range Take action wherever the action takes you.



KeyFolio Executive™ & Mobile Organizer for all generations of iPad

- Removable Bluetooth® keyboard makes you more productive
- Protective, zippered case keeps your iPad safe
- Integrated Folio acts as adjustable stand
- Microfiber lined folio protects screen
- Accepts notepads 7" x 9.5" or smaller

K39695UK/DE/FR/
WW/IT/ES

KeyFolio Executive™ & Mobile Organizer for iPad® & iPad 2

KeyFolio™ Pro 2 Removable Keyboard, Case & Stand for iPad family

(Product code: K39640UK/DE/FR/IT/WW/IT/ES)



KeyLite™ Ultra Slim Touch Keyboard for New iPad

(Product code: K39598UK/DE/FR/WW/IT/ES)

KeyFolio™ Pro 2 Removable Keyboard, Case & Stand for iPad Mini

(Product Code: K39755UK/WW/DE/FR/ES/IT/PN/PT)



The Kensington Virtuoso™ range Work and present in your own style, precisely.

Virtuoso™ Pro Pointer Stylus & Red Laser Pointer (Product code: K39539WW)

Virtuoso™ Pro Pen Stylus & Pen (Product code: K39564WW)

Virtuoso™ Pro Pen Stylus & Pen (Product code: K39526WW)

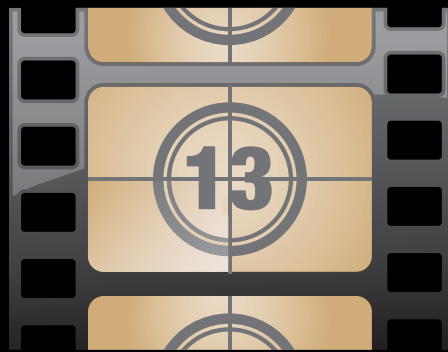
Virtuoso™ Pro Stylus Fine Tip Stylus (Product code: K39563WW)

Virtuoso™ Pro Stylus Fine Tip Stylus (Product code: K39538WW)



Presentair™ Bluetooth® Presenter, Laser & Stylus

Present, point and annotate with the Kensington Presentair™, designed into a sleek, comfortable pen form. The built-in presenter features an intuitive 4-button design that controls PowerPoint® and Keynote®. The powerful red laser pointer communicates via Bluetooth® from up to 10 meters away. The responsive, touch-sensitive tip makes annotations a breeze. Product code (39524EU)



 **Rexel**[®]

 **nobo**[®]

Kensington[®]

